

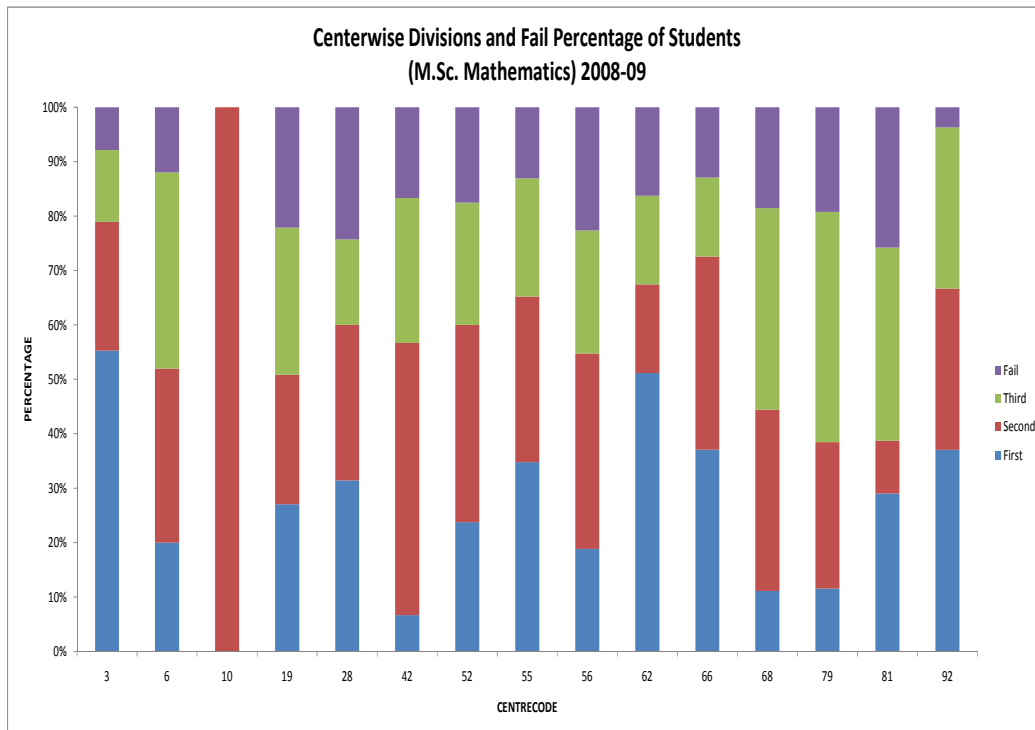
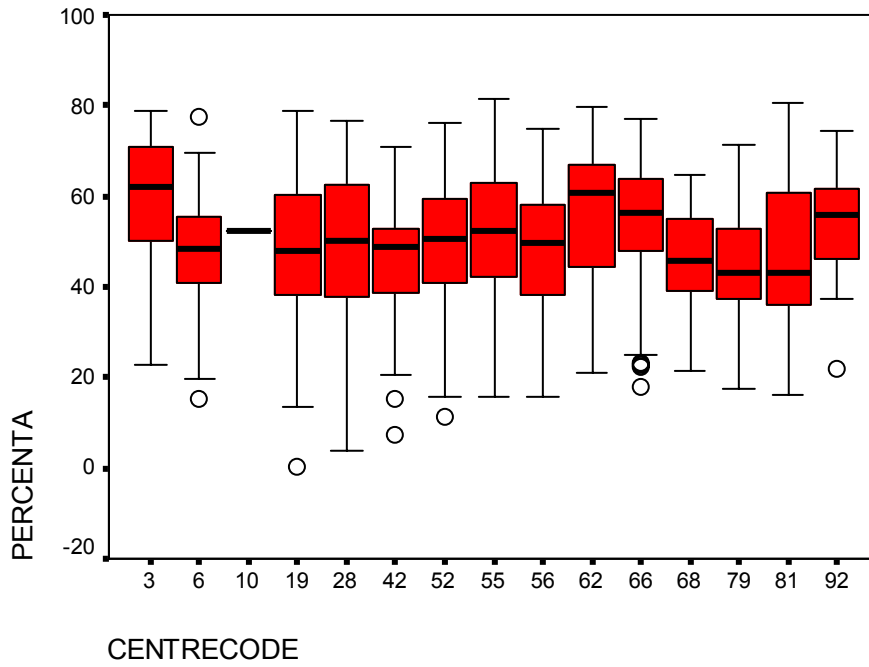
Centre-wise Descriptive Statistics of % of Marks 2009
(M.Sc. Mathematics)

College Code	Mean %	S.D.	C.V.	Highest % of Marks	I	II	III	Fail	No. of Students
03	58.60	14.09	24.04	78.70	55.3	23.7	13.2	7.9	38
06	48.38	14.03	29.00	77.50	20.0	32.0	36.0	12.0	25
10	52.50	--	--	52.50	00	100	00	00	01
19	47.41	16.81	35.46	78.70	26.8	23.6	26.8	22.0	122
28	48.63	17.10	35.16	76.40	31.0	28.2	15.5	23.9	70
42	43.97	14.31	32.55	70.80	6.1	45.5	24.2	15.2	30
52	48.74	15.12	31.02	76.30	23.5	35.8	22.2	17.3	80
55	52.24	14.84	28.41	81.30	34.3	30.0	21.4	12.9	69
56	46.94	15.59	33.21	74.80	18.9	35.8	22.6	22.6	53
62	55.60	16.50	29.68	79.90	50.0	15.9	15.9	15.9	43
66	53.66	14.35	26.74	77.20	37.1	35.5	14.5	12.9	62
68	45.48	12.55	27.59	64.90	11.1	33.3	37.0	18.5	27
79	45.02	12.35	27.43	71.50	10.9	25.5	40.0	18.2	52
81	46.38	16.51	35.60	80.80	27.3	9.1	33.3	24.2	31
92	53.81	12.57	23.36	74.30	35.7	28.6	28.6	3.6	27

Analysis:- The above table reveals that –

- (i) Max. average % marks are obtained by centre code **03**.
- (ii) Centre code **92** performed better in respect of consistency having min. C.V.
- (iii) The highest percentage is from centre code **55**.
- (iv) The Highest percentage of first division is from centre code **03**.
- (v) Min. fail percentage is from centre code **92**.
- (vi) Statistically best five colleges are centre codes- **03, 55, 62, 66, 92**.

M.Sc. (Mathematics)



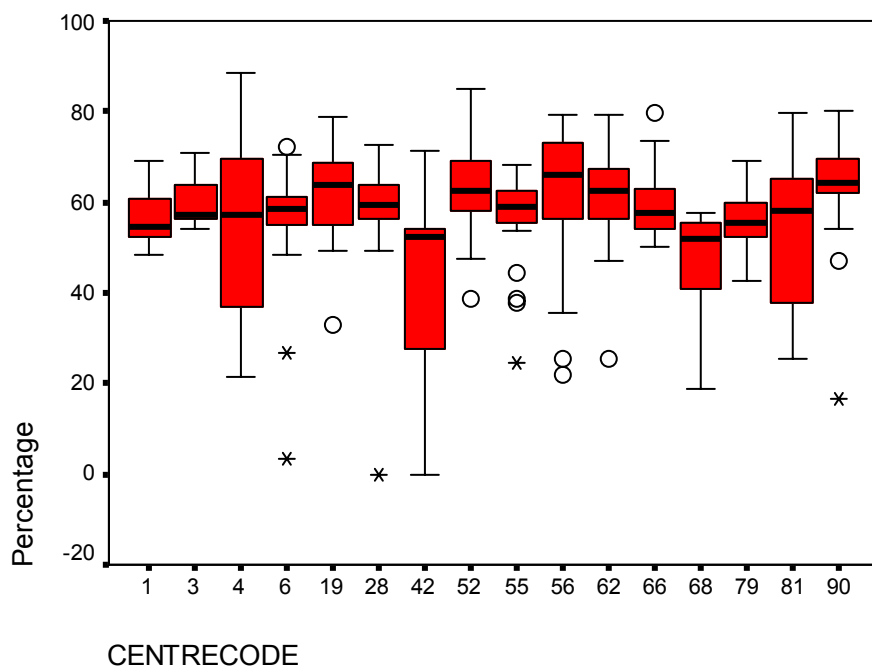
Centre-wise Descriptive Statistics of % of Marks 2009
(M.Sc. Physics)

College Code	Mean %	S.D.	C.V.	Highest % of Marks	I	II	III	Fail	Total No. of Students
01	56.53	6.54	11.57	69.22	33.3	66.7	00	00	09
03	60.33	7.06	11.70	70.78	28.6	71.4	00	00	07
04	54.04	21.06	38.97	88.33	50.0	16.7	8.3	25.0	12
06	54.17	18.40	33.96	72.22	42.9	42.9	00	14.3	14
19	61.87	11.67	18.86	78.89	64.7	29.4	00	5.9	17
28	60.72	5.91	09.73	72.44	40.0	55.0	00	00	19
42	47.24	16.00	33.87	71.11	13.3	53.3	00	26.7	14
52	63.60	10.66	16.76	85.00	63.0	29.6	7.4	00	27
55	56.64	10.89	19.23	68.44	39.1	43.5	13.0	4.3	23
56	60.08	17.79	29.61	79.44	62.5	18.8	00	18.8	16
62	60.48	14.90	24.64	79.11	72.7	9.1	9.1	9.1	11
66	59.31	7.66	12.92	79.89	34.8	65.2	00	00	23
68	45.22	14.44	31.93	57.78	00	60.0	20.0	20.0	10
79	55.79	7.45	13.35	69.22	25.0	58.3	16.7	00	12
81	54.52	16.68	30.59	79.89	44.4	27.8	5.6	22.2	18
90	61.37	15.78	25.71	80.11	76.9	7.7	7.7	7.7	13

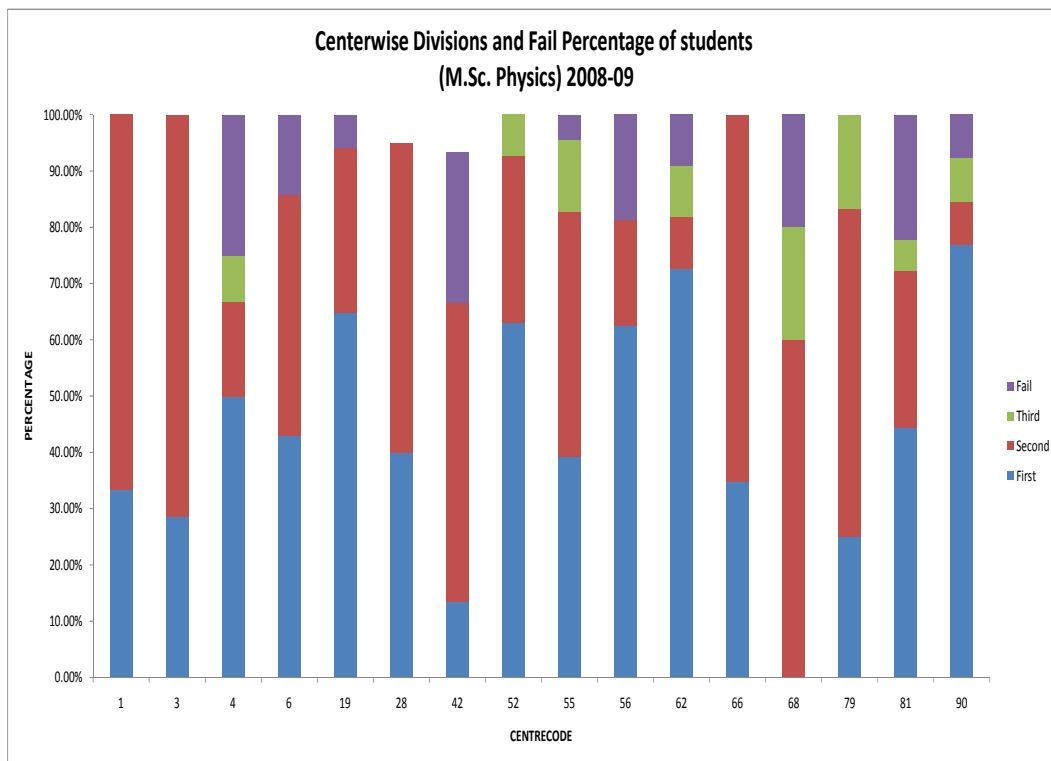
Analysis:- The above table reveals that –

- (i) Max. average % marks are obtained by centre code **52**.
- (ii) Centre code **28** performed better in respect of consistency having min. C.V.
- (iii) The highest percentage is from centre code **04**.
- (iv) The Highest percentage of first division is from centre code **90**.
- (v) Centre Codes **01,03,28,52,66&79** have no failures.
- (vi) Statistically best four colleges are centre codes- **03,19,28,52**.

M.Sc. (Physics)



Centerwise Divisions and Fail Percentage of students
(M.Sc. Physics) 2008-09



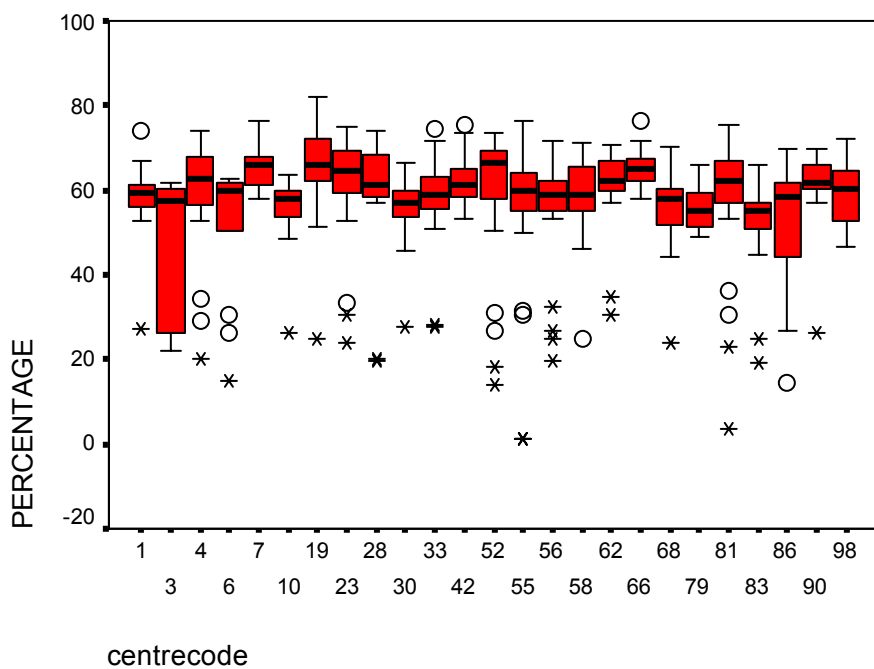
Centre-wise Descriptive Statistics of % of Marks 2009
(M. Sc. Chemistry)

College Code	Mean %	S.D.	C.V.	Highest % of Marks	I	II	III	Fail	Total No. of Students
01	57.97	8.98	15.49	74.22	36.8	57.9	0.0	5.3	19
03	46.44	17.21	37.06	61.89	26.7	26.7	0.0	33.3	13
04	59.34	13.26	22.35	73.89	64.0	24.0	0.0	12.0	25
06	51.95	15.78	30.38	62.78	42.9	35.7	0.0	21.4	14
07	65.67	4.86	07.40	76.22	92.9	7.1	0.0	0.0	14
10	54.26	10.68	19.68	63.44	20.0	70.0	0.0	10.0	10
19	64.51	11.69	18.12	82.11	81.0	14.3	0.0	4.8	21
23	61.24	13.25	21.64	75.00	72.0	16.0	0.0	12.0	25
28	60.21	13.40	22.26	74.00	58.3	33.3	0.0	8.3	24
30	55.37	8.50	15.35	66.33	29.4	58.8	5.9	5.9	17
33	57.75	10.00	17.32	74.33	42.9	50.0	0.0	7.1	28
42	62.05	5.81	09.36	75.56	60.0	40.0	0.0	0.0	30
52	60.21	15.15	25.16	73.67	64.9	16.2	0.0	10.8	34
55	56.89	15.16	26.65	76.44	48.8	41.9	0.0	9.3	43
56	54.59	14.64	26.82	71.89	45.5	36.4	0.0	18.2	22
58	59.07	8.83	14.95	71.11	47.2	44.4	5.6	2.8	36
62	60.60	10.62	17.52	70.67	73.7	15.8	0.0	10.5	19
66	64.90	4.19	06.46	76.44	88.9	11.1	0.0	0.0	27
68	55.01	10.00	18.18	70.44	29.4	52.9	11.8	5.9	17
79	55.73	4.99	08.95	65.78	15.4	84.6	0.0	0.0	13
81	59.09	14.61	24.72	75.44	61.1	27.8	2.8	8.3	36
83	52.68	10.83	20.56	66.11	20.8	62.5	8.3	8.3	24
86	52.61	16.81	31.95	70.00	37.5	37.5	0.0	25.0	16
90	60.03	11.27	18.77	69.56	83.3	8.3	0.0	8.3	12
98	59.72	7.26	12.16	72.00	50.0	44.4	5.6	0.0	18

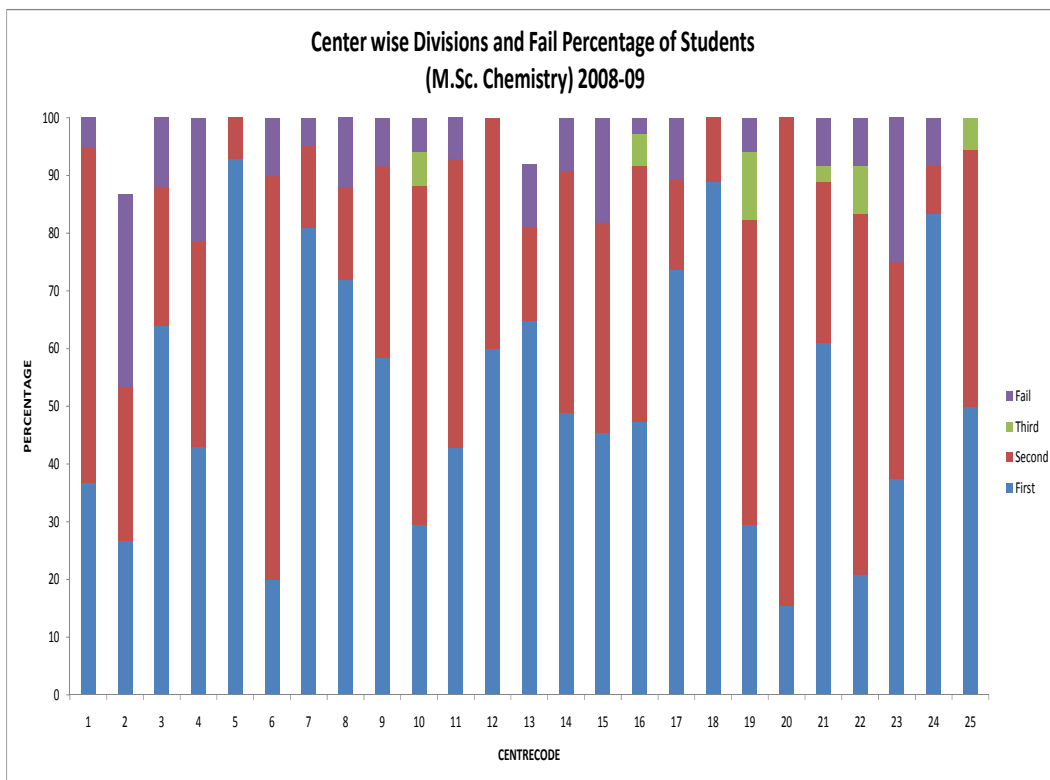
Analysis:- The above table reveals that –

- (i) Max. average % marks are obtained by centre code **07**.
- (ii) Centre code **66** performed better in respect of consistency having min. C.V.
- (iii) The highest percentage is from centre code **19**.
- (iv) The Highest percentage of first division is from centre code **07**.
- (v) Centre Codes **07,42,66,79,98** have no failures.
- (vi) Statistically best four colleges are centre codes- **07,19,42,66**.

M.Sc.(Chemistry)



Center wise Divisions and Fail Percentage of Students
(M.Sc. Chemistry) 2008-09



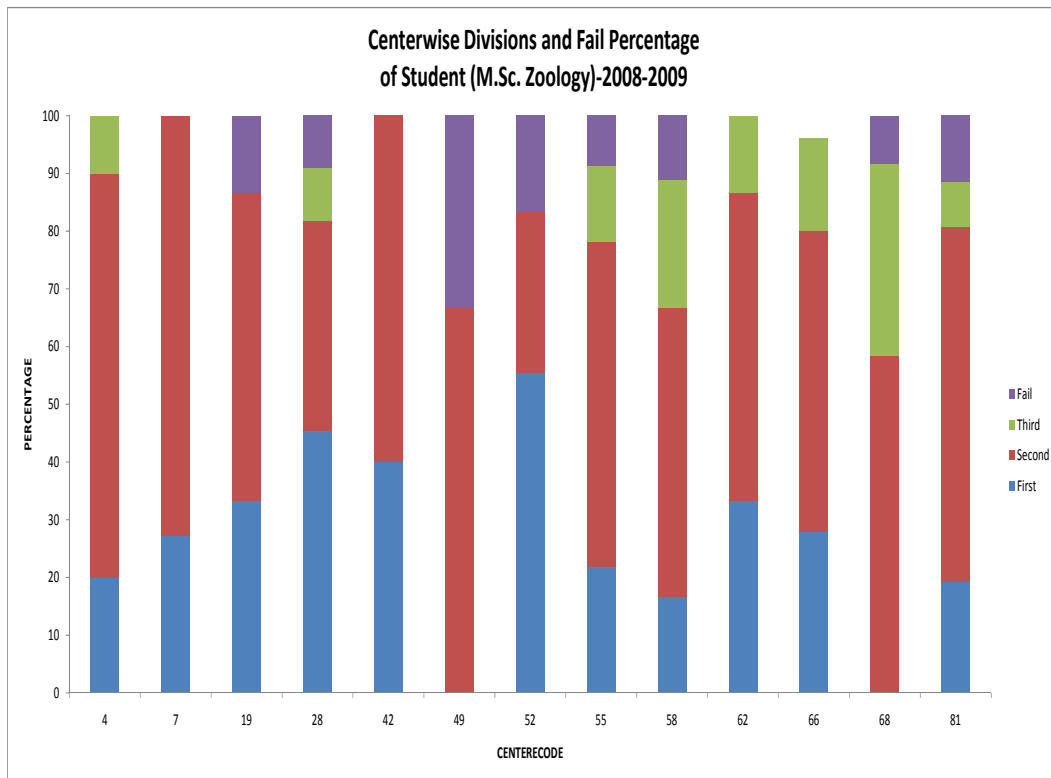
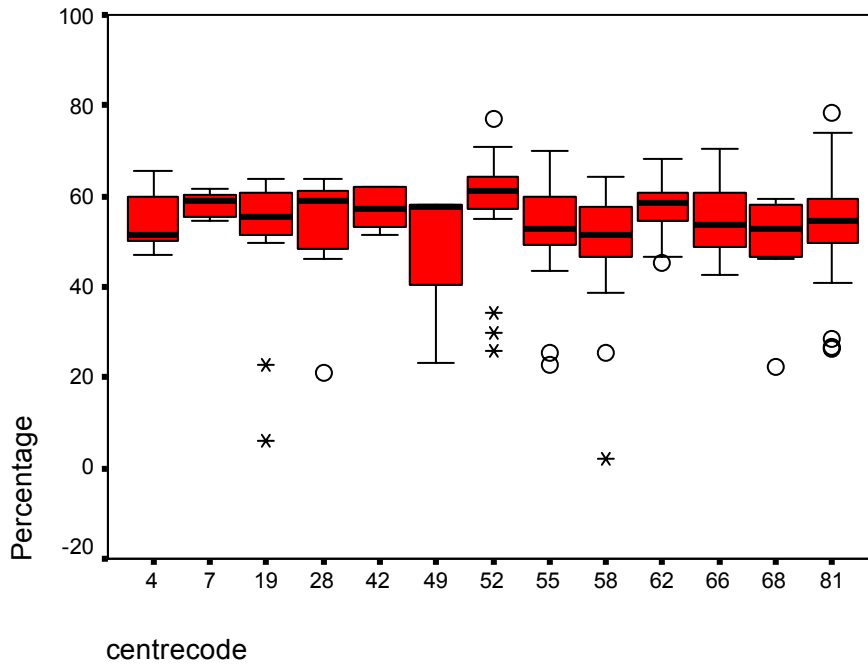
Centre-wise Descriptive Statistics of % of Marks 2009
(M. Sc. Zoology)

College Code	Mean %	S.D.	C.V.	Highest % of Marks	I	II	III	Fail	Total No. of Students
04	54.03	06.07	11.23	65.78	20.0	70.0	10.0	00.0	10
07	58.19	02.65	04.55	61.67	27.3	72.7	00.0	00.0	11
19	51.14	15.93	31.15	64.00	33.3	53.3	00.0	13.3	15
28	53.46	12.37	23.14	64.00	45.5	36.4	09.1	09.1	11
42	57.18	04.71	08.24	61.89	40.0	60.0	00.0	00.0	05
49	46.33	21.02	45.37	58.11	00.0	66.7	00.0	33.3	03
52	57.48	13.64	23.73	77.11	55.6	27.8	00.0	16.7	18
55	52.67	11.36	21.57	70.11	21.7	56.5	13.0	08.7	23
58	48.48	14.80	30.53	64.22	16.7	50.0	22.2	11.1	18
62	57.85	06.47	11.18	68.44	33.3	53.3	13.3	00.0	15
66	54.91	07.46	13.59	70.22	28.0	52.0	16.0	00.0	24
68	50.48	10.31	20.42	59.44	00.0	58.3	33.3	08.3	12
81	53.69	12.80	23.84	78.33	19.2	61.5	07.7	11.5	26

Analysis:- The above table reveals that –

- (i) Max. average % marks are obtained by centre code **07**.
- (ii) Centre code **07** performed better in respect of consistency having min. C.V.
- (iii) The highest percentage is from centre code **81**.
- (iv) The Highest percentage of first division is from centre code **52**.
- (v) Centre codes **04,07,42,62,66** have no failures.
- (vi) Statistically best four colleges are centre codes- **07,42,52&62**.

M.Sc. (Zoology)



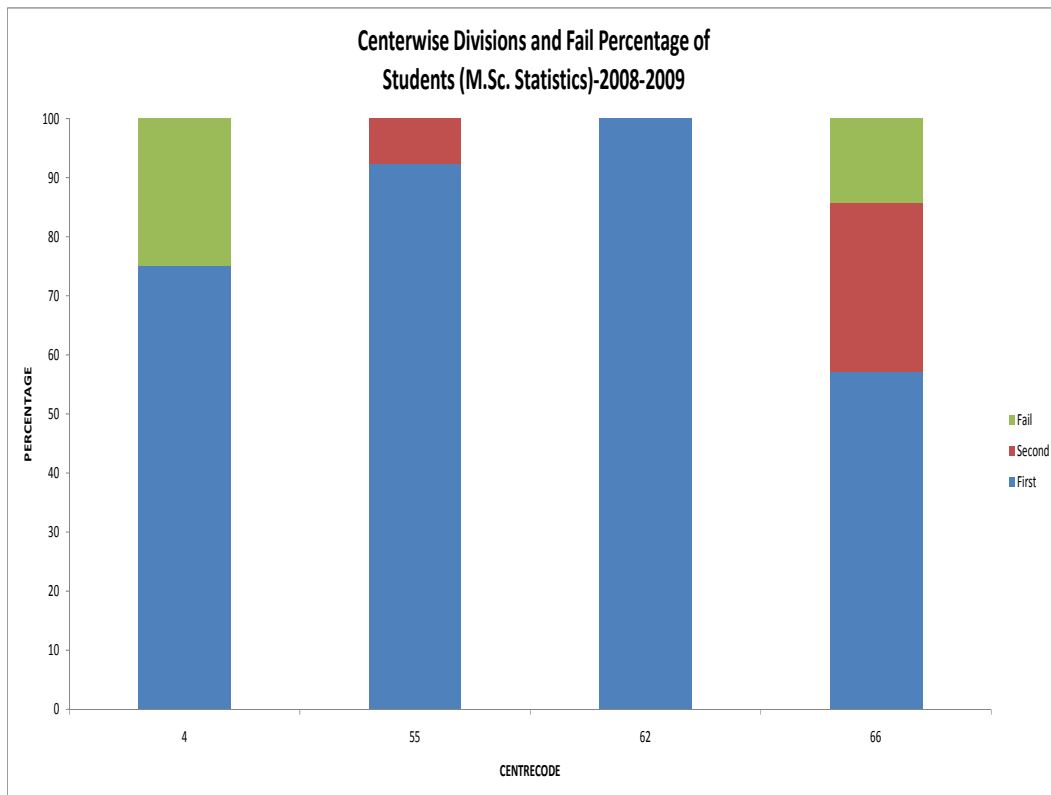
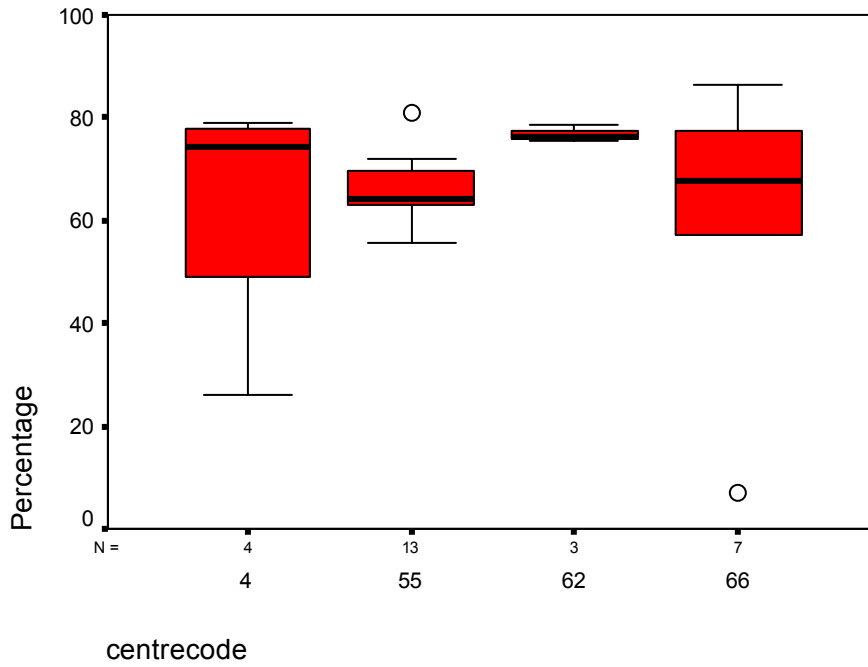
Centre-wise Descriptive Statistics of % of Marks 2009
(M. Sc. Statistics)

College Code	Mean %	S.D.	C.V.	Highest % of Marks	I	II	III	Fail	Total No. of Students
04	63.44	25.06	39.50	79.11	75.0	00.0	00.0	25.0	04
55	66.05	06.33	09.58	81.00	92.3	07.7	00.0	00.0	13
62	76.33	01.64	02.15	78.78	100.0	00.0	00.0	00.0	03
66	61.54	26.54	43.13	86.56	57.1	28.6	00.0	14.3	07

Analysis:- The above table reveals that –

- (i) Max. average % marks are obtained by centre code **62**.
- (ii) Centre code **62** performed better in respect of consistency having min. C.V.
- (iii) The highest percentage is from centre code **66**.
- (iv) The Highest percentage of first division is from centre code **62**.
- (v) Min. fail percentage is from centre code **55,62**.
- (vi) Statistically best two colleges are centre codes- **55,62**.

M.Sc. (Statistics)



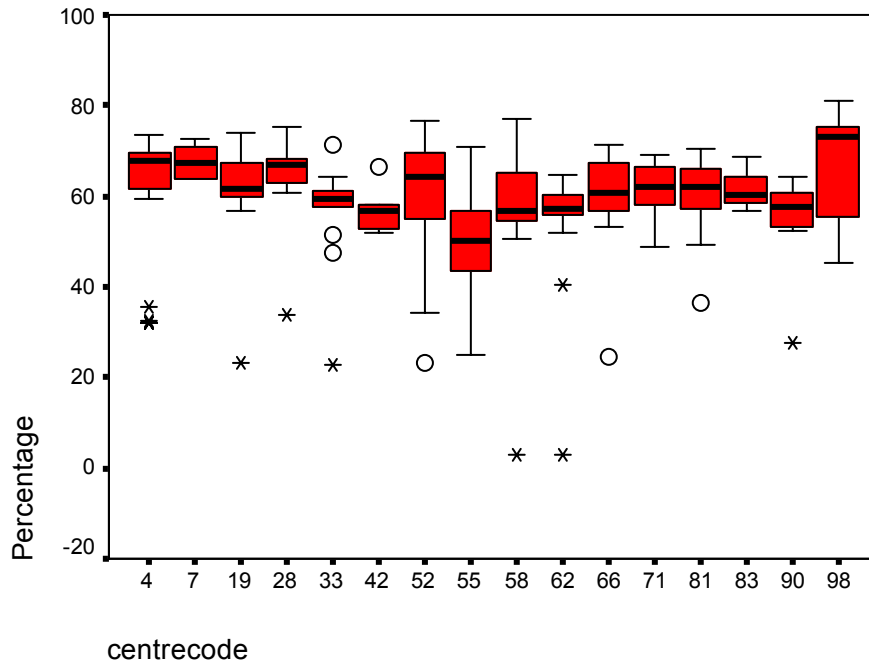
Centre-wise Descriptive Statistics of % of Marks 2009
(M. Sc. Botany)

College Code	Mean %	S.D.	C.V.	Highest % of Marks	I	II	III	Fail	Total No. of Students
04	60.94	14.75	24.20	73.67	75.0	05.0	00.0	20.0	20
07	67.61	03.29	04.87	72.44	100.0	00.0	00.0	00.0	10
19	60.97	10.77	17.66	74.11	64.7	29.4	00.0	05.9	17
28	64.94	09.18	14.14	75.44	93.8	00.0	00.0	06.3	16
33	56.88	11.21	19.71	71.11	35.7	50.0	07.1	07.1	14
42	57.15	05.16	09.03	66.44	16.7	83.3	00.0	00.0	06
52	60.16	14.28	23.74	76.44	62.5	25.0	00.0	12.5	16
55	49.95	11.19	22.40	70.67	16.7	45.8	29.2	08.3	24
58	57.29	13.69	23.90	77.00	43.5	52.2	00.0	04.3	23
62	53.53	15.05	28.12	64.67	33.3	53.3	06.7	06.7	15
66	59.87	10.93	18.26	71.44	50.0	43.8	00.0	06.3	16
71	61.47	06.48	10.54	69.11	63.6	36.4	00.0	00.0	11
81	60.64	07.16	11.81	70.33	61.5	34.6	03.8	00.0	26
83	61.36	03.87	06.31	68.78	54.5	45.5	00.0	00.0	11
90	54.50	11.51	21.12	64.11	37.5	50.0	00.0	12.5	08
98	67.15	12.73	18.96	81.11	66.5	22.2	11.1	00.0	09

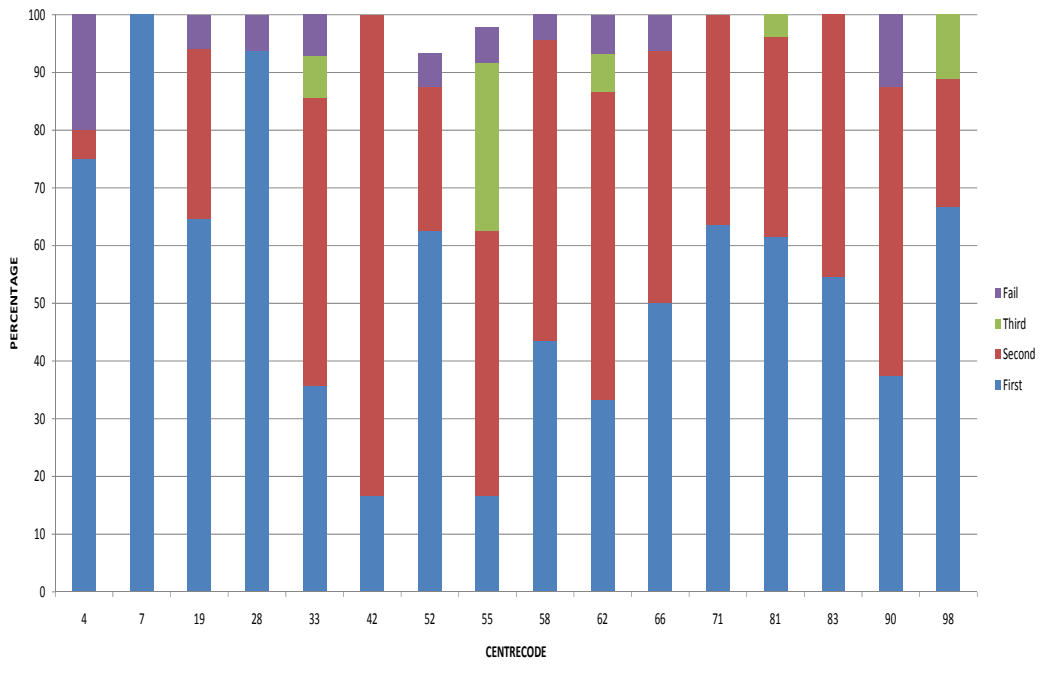
Analysis:- The above table reveals that –

- (i) Max. average % marks are obtained by centre code **07**.
- (ii) Centre code **07** performed better in respect of consistency having min. C.V.
- (iii) The highest percentage is from centre code **98**.
- (iv) The Highest percentage of first division is from centre code **07**.
- (v) Centre codes **07,42,71,81,83,98** have no failures.
- (vi) Statistically best five colleges are centre codes- **07,28,71,83,98**.

M.Sc. (Botany)



Centerwise Divisions and Fail Percentage of Students (M.Sc. Botany)-2008-2009



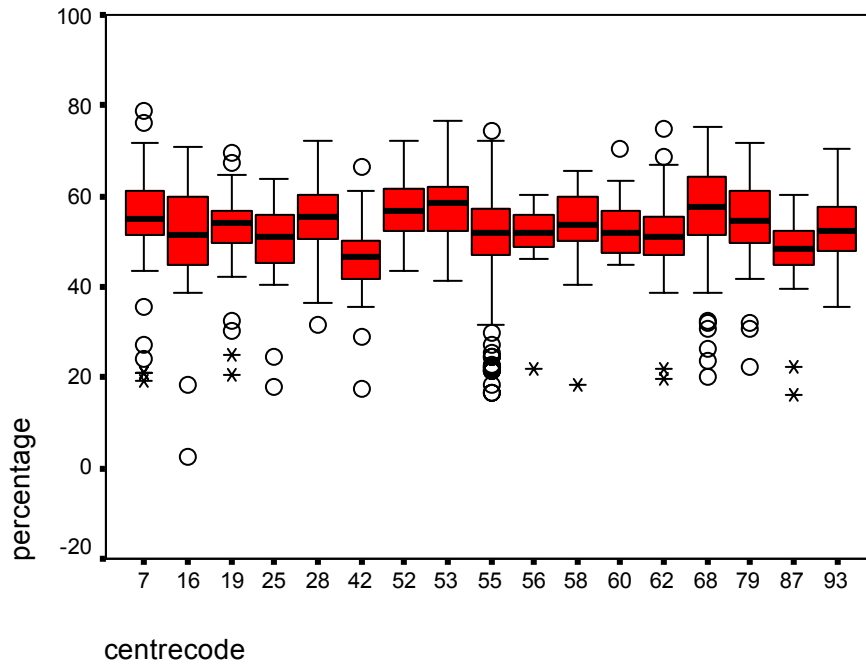
Centre-wise Descriptive Statistics of % of Marks 2009
(M. Com.)

College Code	Mean %	S.D.	C.V.	Highest % of Marks	I	II	III	Fail	Total No. of Students
07	54.75	10.91	19.93	78.90	30.3	51.7	10.1	6.7	88
16	51.70	12.55	24.27	70.80	26.7	42.2	26.7	4.4	45
19	53.13	7.22	13.59	69.50	14.2	67.5	15.0	3.3	120
25	48.85	11.23	22.99	63.70	10.0	55.0	25.0	10.0	20
28	55.56	7.21	12.98	72.20	27.8	56.4	14.3	0.8	132
42	46.15	7.51	16.27	66.30	3.7	38.9	50.0	5.6	53
52	57.36	6.79	11.84	72.30	36.9	55.0	7.2	0.0	110
53	57.96	8.00	13.80	76.60	42.1	47.4	10.5	0.0	19
55	51.29	9.57	18.66	74.40	14.1	57.5	22.7	5.8	313
56	49.43	11.18	22.62	60.10	11.1	66.7	11.1	11.1	9
58	51.68	12.30	23.80	65.60	16.7	58.3	16.7	8.3	12
60	53.22	6.55	12.31	70.50	17.4	52.2	30.4	0.0	23
62	51.40	8.58	16.69	75.00	15.3	57.6	24.7	2.4	85
68	56.86	10.00	17.59	75.50	42.6	44.9	8.1	4.4	136
79	54.62	9.63	17.63	71.60	31.2	49.4	15.6	3.9	77
87	47.95	8.49	17.71	60.10	2.6	52.6	39.5	5.3	38
93	52.91	7.01	13.25	70.60	17.6	56.8	24.3	1.4	74

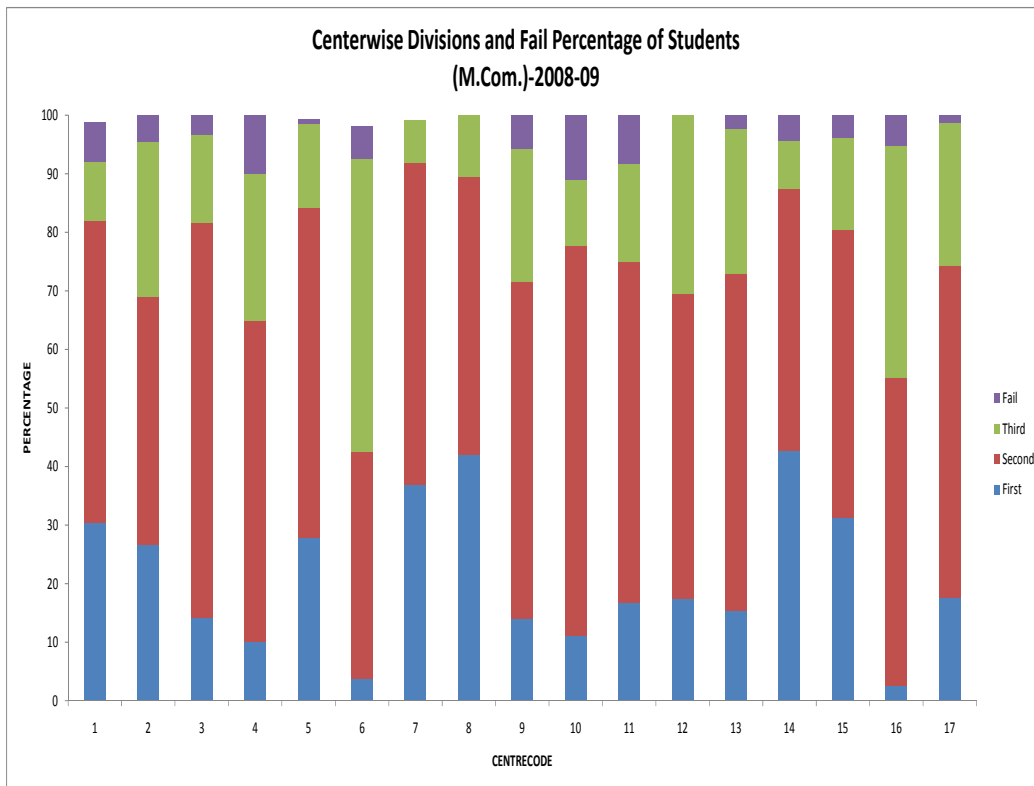
Analysis:- The above table reveals that –

- (i) Max. average % marks are obtained by centre code **53**.
- (ii) Centre code **52** performed better in respect of consistency having min. C.V.
- (iii) The highest percentage is from centre code **07**.
- (iv) The Highest percentage of first division is from centre code **68**.
- (v) Centre Codes **52,53,60** have no failures.
- (vi) Statistically best five colleges are centre codes- **28,52,53,60,68**.

M.Com.



Centerwise Divisions and Fail Percentage of Students
(M.Com.)-2008-09



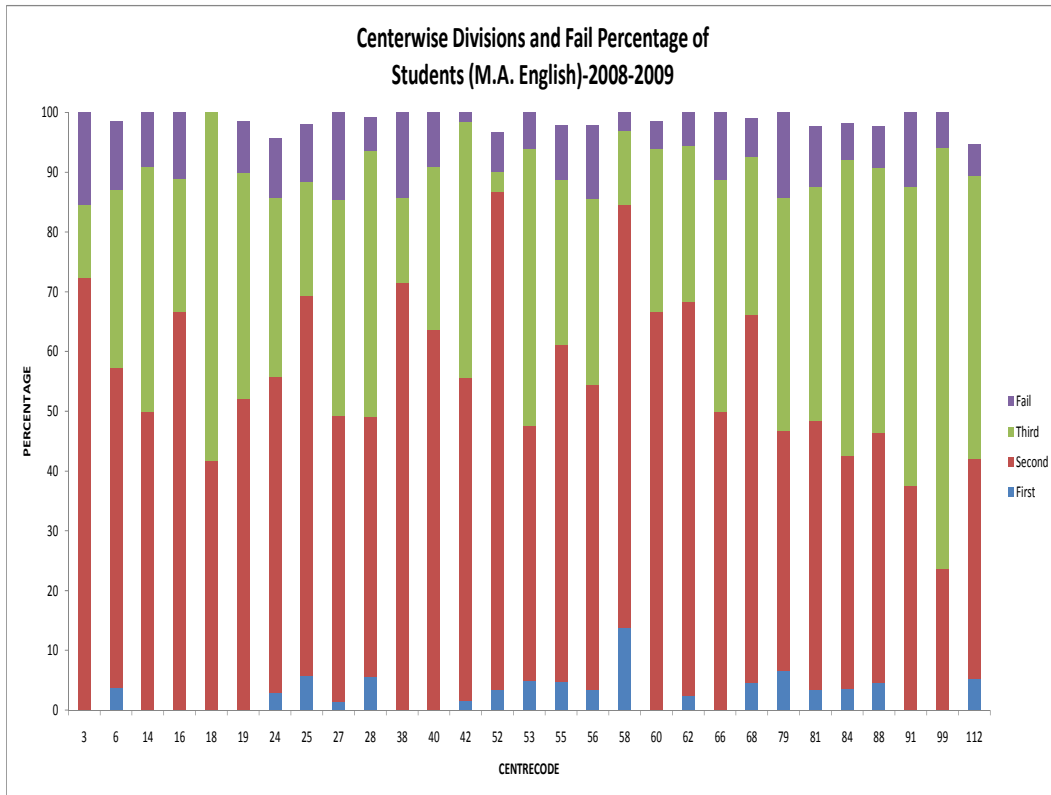
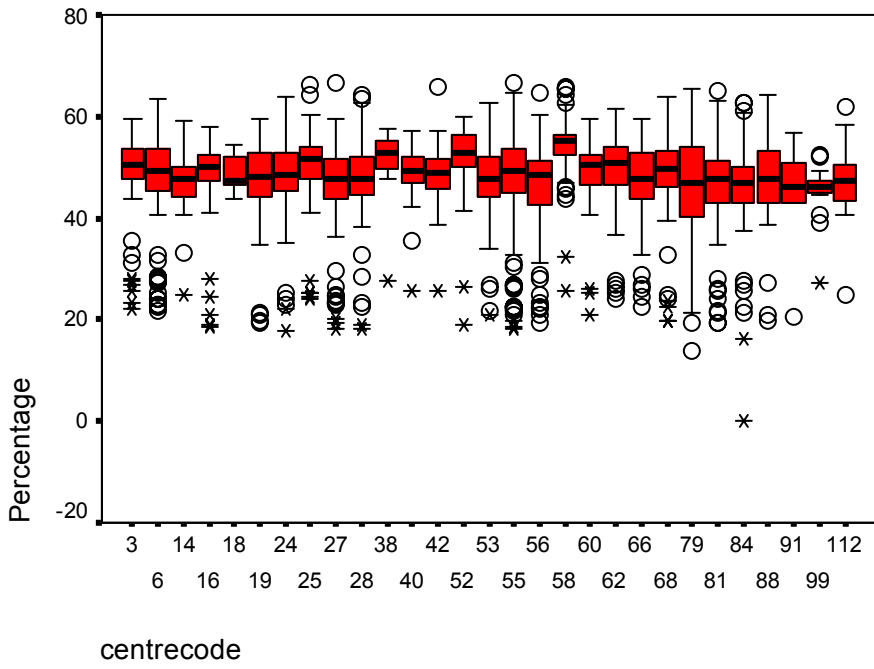
Centre-wise Descriptive Statistics of % of Marks 2009
(M. A. ENGLISH)

College Code	Mean %	S.D.	C.V.	Highest % of Marks	I	II	III	Fail	Total No. of Students
03	47.87	09.26	19.34	59.60	0.0	72.4	12.1	15.5	58
06	47.56	09.21	19.36	63.50	3.8	53.4	29.8	11.5	129
14	47.07	07.53	15.99	59.00	0.0	50.0	40.9	09.1	22
16	47.38	09.86	20.81	58.10	0.0	66.7	22.2	11.1	45
18	48.67	03.56	07.31	54.40	0.0	41.7	58.3	00.0	12
19	47.16	08.71	18.46	59.60	0.0	52.2	37.7	08.7	68
24	47.45	09.15	19.28	63.80	2.9	52.9	30.0	10.0	67
25	49.35	09.33	18.90	66.10	5.8	63.5	19.2	09.6	51
27	45.47	10.43	22.93	66.80	1.3	48.0	36.0	14.7	75
28	47.67	07.98	16.74	64.40	5.6	43.5	44.4	05.6	107
38	49.73	10.21	20.53	57.40	0.0	71.4	14.3	14.3	07
40	48.27	06.96	14.41	57.10	0.0	63.6	27.3	09.1	22
42	48.64	05.63	11.57	65.80	1.6	54.0	42.9	01.6	63
52	51.06	08.78	17.19	60.00	3.3	83.3	03.3	06.7	29
53	47.55	07.49	15.75	62.80	4.9	42.7	46.3	06.1	82
55	47.82	09.16	19.15	66.60	4.8	56.4	27.7	09.0	184
56	45.97	09.22	20.05	64.80	3.3	51.1	31.1	12.2	88
58	53.92	06.70	12.42	65.90	13.8	70.8	12.3	03.1	65
60	49.05	06.97	14.20	59.70	0.0	66.7	27.3	04.5	65
62	49.22	07.67	15.58	61.30	2.3	65.9	26.1	05.7	88
66	46.56	08.38	17.99	59.40	0.0	50.0	38.7	11.3	62
68	48.83	08.27	16.93	63.90	4.6	61.5	26.6	06.4	108
79	45.95	10.46	22.76	65.40	6.5	40.3	39.0	14.3	77
81	46.18	09.33	20.20	65.20	3.4	44.9	39.3	10.1	87
84	46.13	08.95	19.40	62.80	3.5	39.1	49.6	06.1	113
88	46.92	09.12	19.43	64.20	4.7	41.9	44.2	07.0	42
91	44.74	10.77	24.07	56.70	0.0	37.5	50.0	12.5	08
99	45.28	05.74	12.67	52.50	0.0	23.5	70.6	05.9	17
112	47.13	07.81	16.57	61.90	5.3	36.8	47.4	05.3	18

Analysis:- The above table reveals that –

- (i) Max. average % marks are obtained by centre code **58**.
- (ii) Centre code **18** performed better in respect of consistency having min. C.V.
- (iii) The highest percentage is from centre code **27**.
- (iv) The Highest percentage of first division is from centre code **58**.
- (v) Min. fail percentage is from centre code **18**.
- (vi) Statistically best five colleges are centre codes- **18,52,58,60,62**.

M.A. (English)



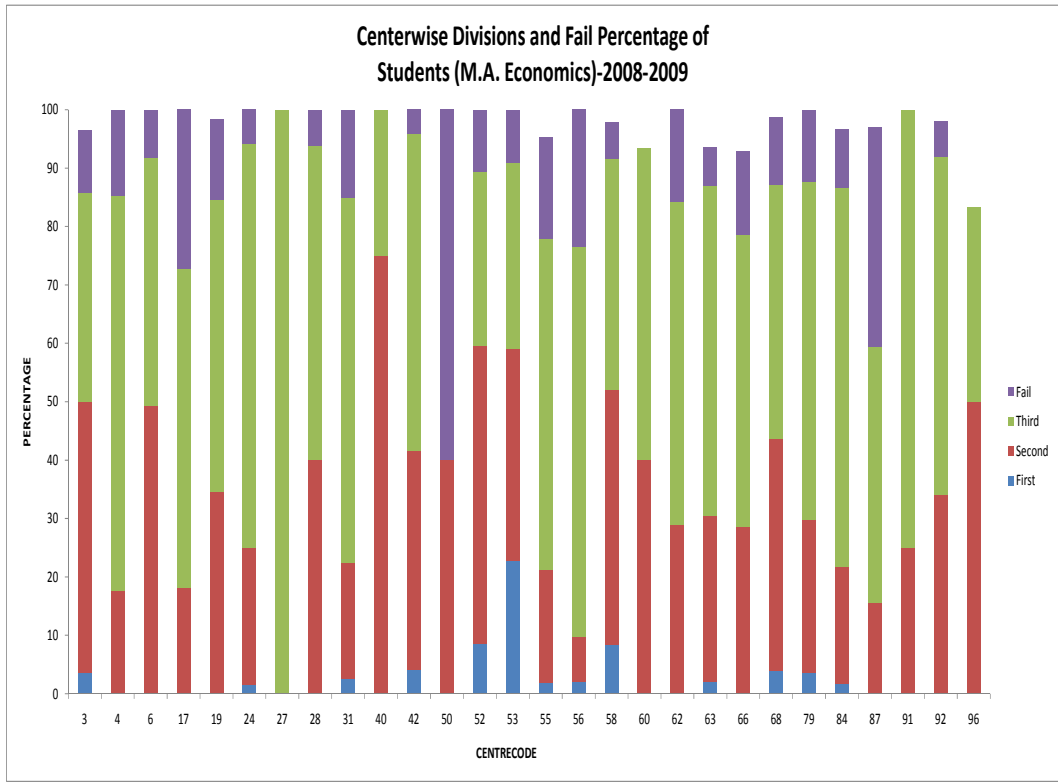
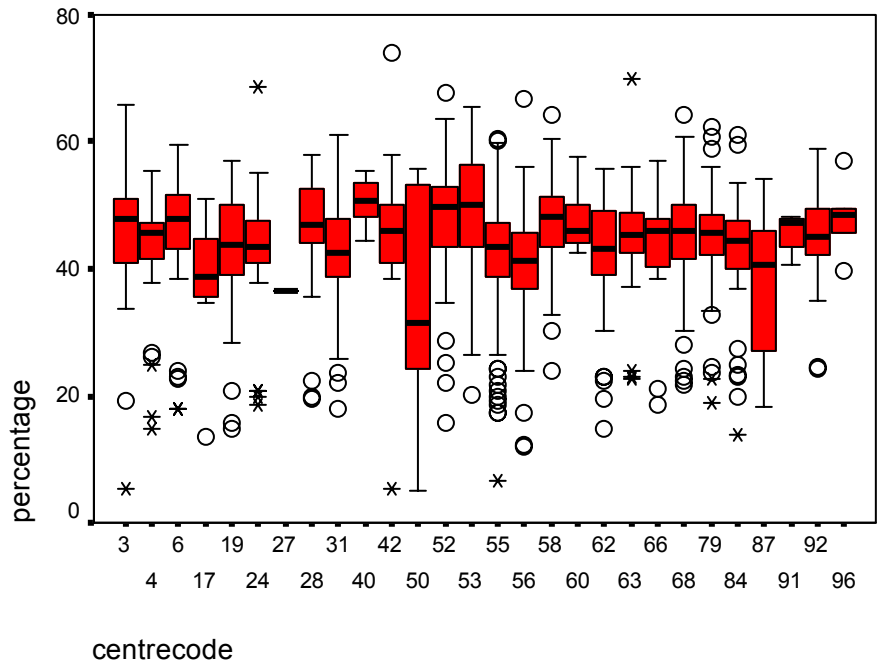
Centre-wise Descriptive Statistics of % of Marks 2009
(M. A. ECONOMICS)

College Code	Mean %	S.D.	C.V.	Highest % of Marks	I	II	III	Fail	Total No. of Students
03	45.12	12.08	26.77	65.90	03.6	46.4	35.7	10.7	27
04	42.71	09.90	23.17	55.40	00.0	17.6	67.6	14.7	34
06	45.89	09.07	19.76	59.40	00.0	49.2	42.6	08.2	61
17	38.92	10.25	26.33	50.90	00.0	18.2	54.5	27.3	11
19	43.39	09.17	21.13	57.00	00.0	34.5	50.0	13.8	57
24	43.49	07.76	17.84	68.60	01.5	23.5	69.1	05.9	68
27	36.40	---	---	36.40	00.0	00.0	100.0	00.0	01
28	46.94	08.01	17.06	57.80	00.0	40.0	53.8	06.2	65
31	42.22	08.63	20.44	61.00	02.5	20.0	62.5	15.0	40
40	50.52	03.34	06.61	55.50	00.0	75.0	25.0	00.0	12
42	45.53	11.39	25.01	74.10	04.2	37.5	54.2	04.2	24
50	33.92	21.10	62.20	55.60	00.0	40.0	00.0	60.0	05
52	47.64	10.16	21.32	67.80	08.5	51.1	29.8	10.6	47
53	49.60	11.77	23.72	65.40	22.7	36.4	31.8	09.1	22
55	41.72	10.49	25.14	60.40	01.9	19.2	56.7	17.3	99
56	39.87	09.89	24.80	66.70	02.0	07.8	66.7	23.5	51
58	47.79	07.89	16.50	64.30	08.3	43.8	39.6	06.3	47
60	47.98	05.02	10.46	57.60	00.0	40.0	53.3	00.0	14
62	41.58	09.80	23.56	55.60	00.0	28.9	55.3	15.8	38
63	44.97	08.15	18.12	69.80	02.2	28.3	56.5	06.5	43
66	42.22	11.13	26.36	57.10	00.0	28.6	50.0	14.3	13
68	45.33	08.50	18.75	64.20	03.8	39.7	43.6	11.5	77
79	44.70	08.52	19.06	62.40	03.5	26.3	57.9	12.3	57
84	42.92	08.83	20.57	61.20	01.7	20.0	65.0	10.0	58
87	37.52	11.01	29.34	54.10	00.0	15.6	43.8	37.5	31
91	45.70	03.54	07.74	48.10	00.0	25.0	75.0	00.0	04
92	45.35	06.37	14.04	59.00	00.0	34.0	58.0	06.0	49
96	48.08	06.30	13.10	57.00	00.0	50.0	33.3	00.0	05

Analysis:- The above table reveals that –

- (i) Max. average % marks are obtained by centre code **40**.
- (ii) Centre code **40** performed better in respect of consistency having min. C.V.
- (iii) The highest percentage is from centre code **42**.
- (iv) The Highest percentage of first division is from centre code **53**.
- (v) Min. fail percentage is from centre code **40,60,91,96**.
- (vi) Statistically best five colleges are centre codes- **40,53,60,91,96**.

M.A. (Economics)



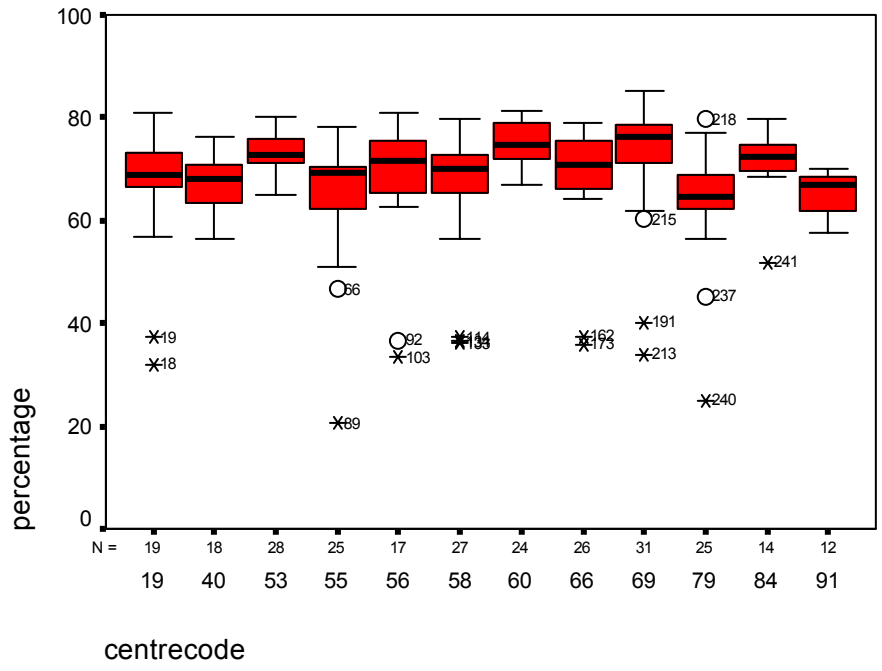
Centre-wise Descriptive Statistics of % of Marks 2009
(M. A. DRAWING)

College Code	Mean %	S.D.	C.V.	Highest % of Marks	I	II	III	Fail	Total No. of Students
19	66.28	12.61	19.02	81.00	84.2	05.3	05.3	5.3	19
40	67.07	05.37	08.00	76.10	94.4	05.6	00.0	0.0	18
53	73.27	03.85	05.25	80.00	100.0	00.0	00.0	0.0	28
55	64.54	11.96	18.53	78.10	80.0	12.0	04.0	4.0	25
56	67.68	13.24	19.56	80.90	88.2	00.0	05.9	5.9	17
58	66.31	11.86	17.88	79.60	85.2	03.7	11.1	0.0	27
60	75.03	04.35	05.79	81.20	100.0	00.0	00.0	0.0	24
66	69.03	10.50	15.21	78.80	92.3	00.0	03.8	3.8	26
69	73.00	11.29	15.46	85.30	93.5	00.0	03.2	3.2	31
79	64.02	10.47	16.35	79.60	88.0	04.0	04.0	4.0	25
84	71.29	06.40	08.97	79.80	92.9	07.1	00.0	0.0	14
91	65.22	04.40	06.74	69.90	75.00	25.0	00.0	0.0	12

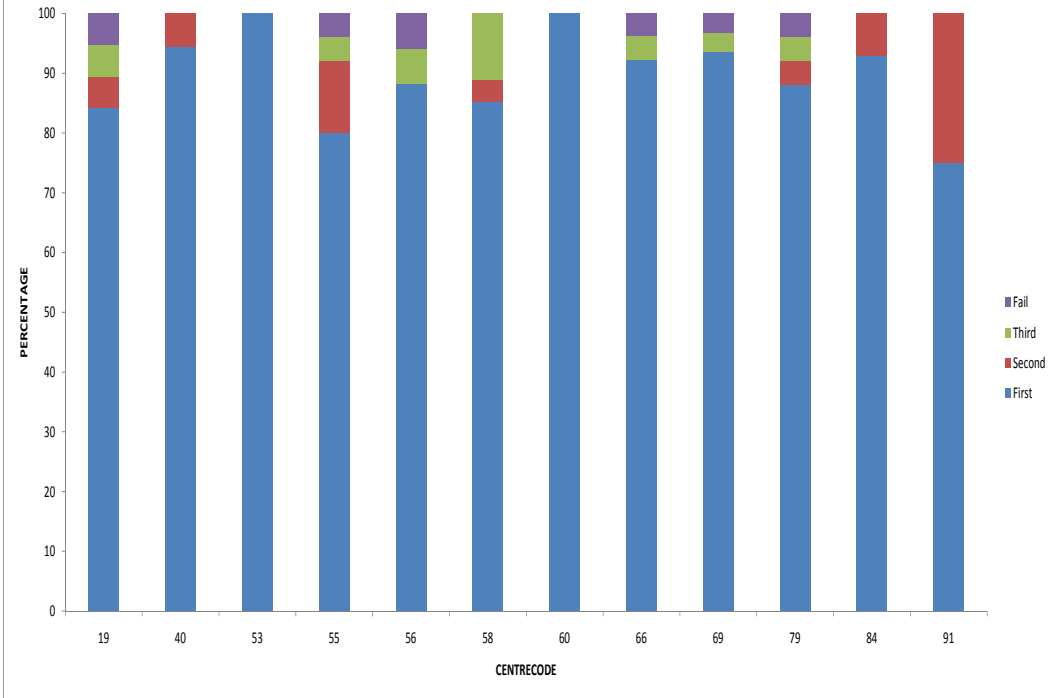
Analysis:- The above table reveals that –

- (i) Max. average % marks are obtained by centre code **60**.
- (ii) Centre code **53** performed better in respect of consistency having min. C.V.
- (iii) The highest percentage is from centre code **69**.
- (iv) The Highest percentage of first division is from centre code **53,60**.
- (v) Min. fail percentage is from centre code **40,53,58,60,84,91**.
- (vi) Statistically best three colleges are centre codes- **40,53&60**.

M.A. (Drawing)



Centerwise Divisions and Fail Percentage of Students (M.A. Drawing)-2008-2009



Centre-wise Descriptive Statistics of % of Marks 2009

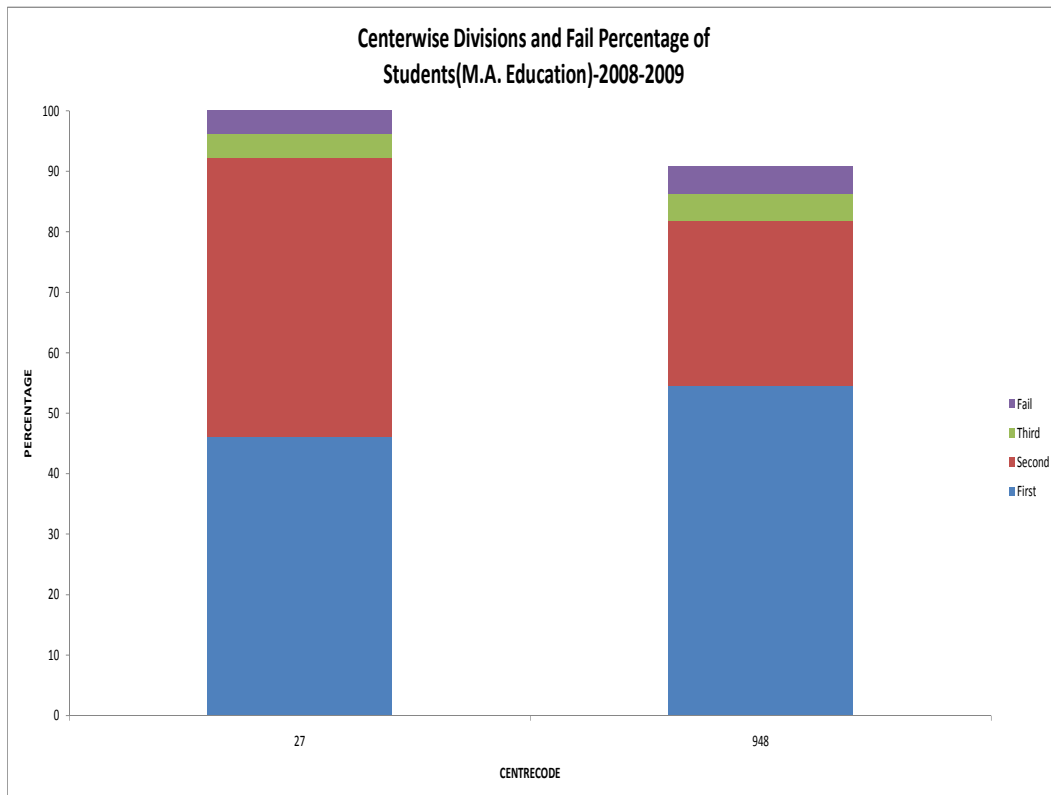
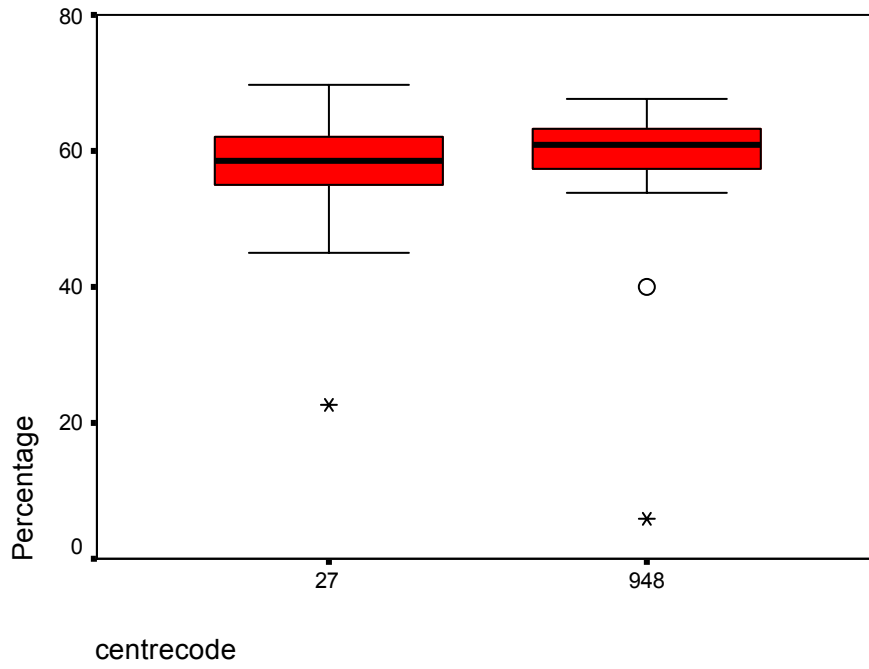
(M. A. EDUCATION)

College Code	Mean %	S.D.	C.V.	Highest % of Marks	I	II	III	Fail	Total No. of Students
27	56.88	08.86	15.57	69.70	46.2	46.2	3.8	3.8	26
948	57.29	13.46	23.49	67.70	54.5	27.3	4.5	4.5	20

Analysis:- The above table reveals that –

There are only two colleges with M.A. Education. Statistically, Centre Code **948** has performed better than Centre Code **27**.

M.A. (Education)



Centre-wise Descriptive Statistics of % of Marks 2009

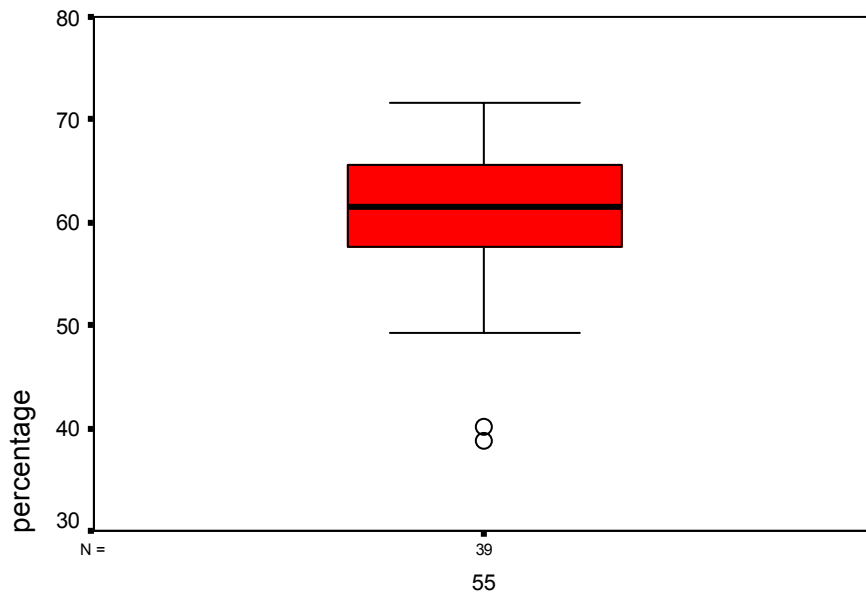
(M. A. DEFENCE STUDIES)

College Code	Mean %	S.D.	C.V.	Highest % of Marks	I	II	III	Fail	Total No. of Students
55	60.78	6.79	11.17	71.70	60.0	32.5	5.0	0.0	39

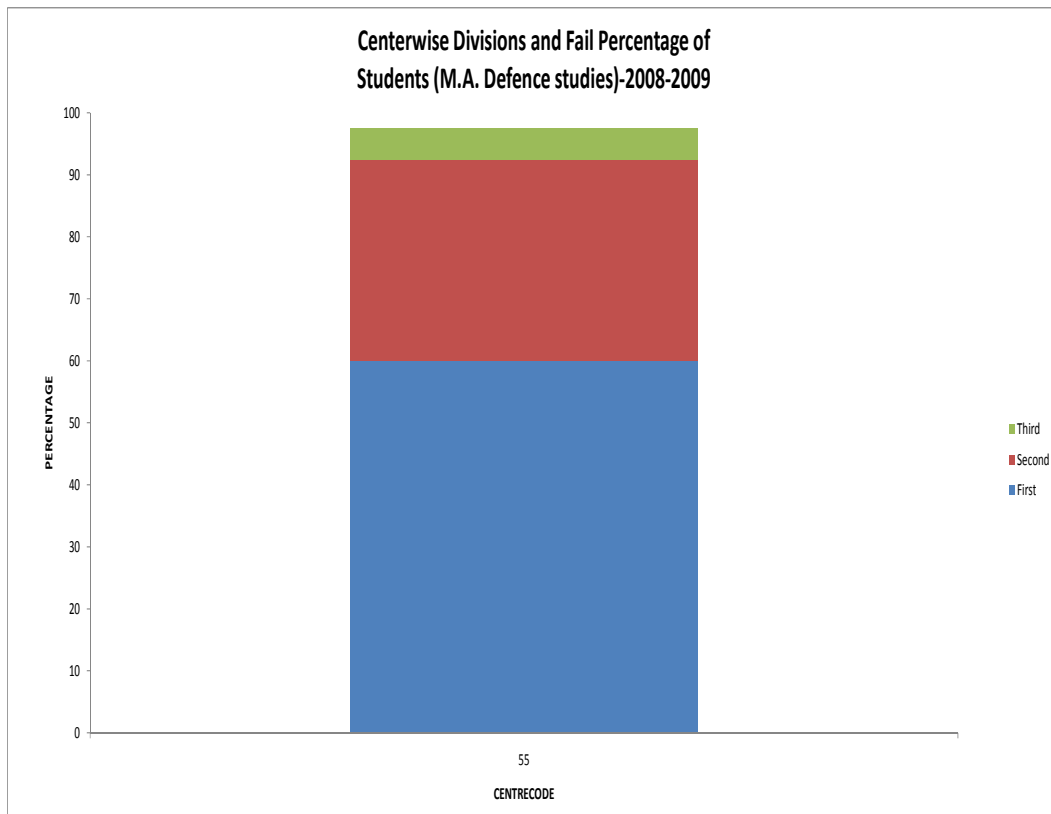
Analysis:- The above table reveals that –

There are only one college (55) with M.A. Defence Studies and it has performed quite satisfactorily.

M.A. (Defence Studies)



centrecode



Centre-wise Descriptive Statistics of % of Marks 2009

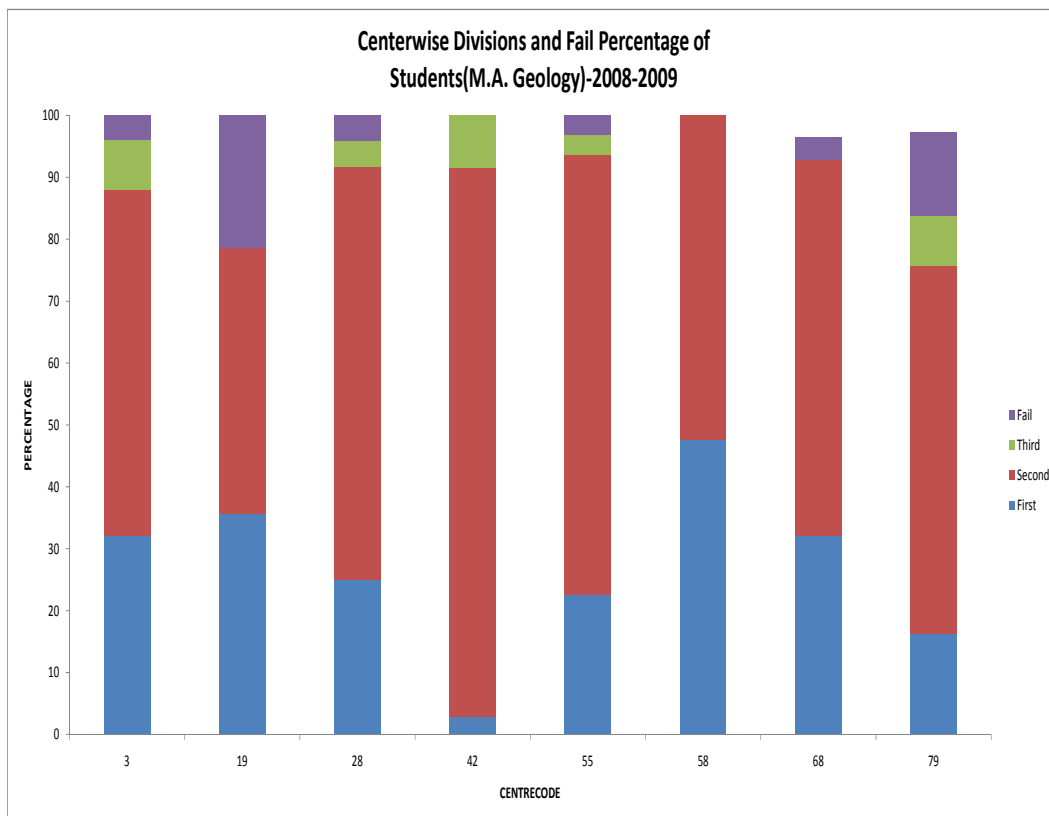
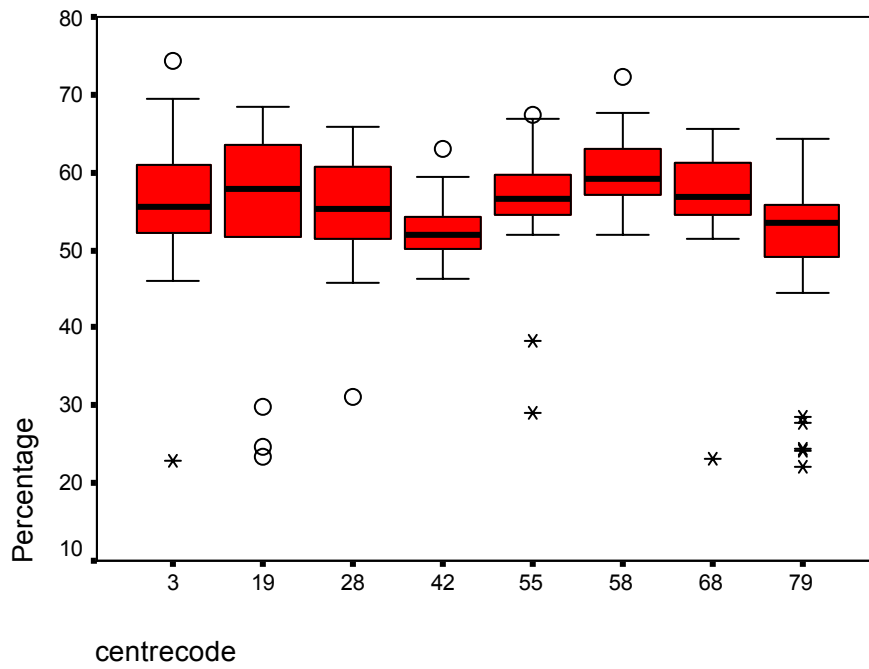
(M. A. GEOGRAPHY)

College Code	Mean %	S.D.	C.V.	Highest % of Marks	I	II	III	Fail	Total No. of Students
03	55.78	09.87	17.69	74.30	32.0	56.0	8.0	04.0	25
19	53.02	15.59	29.40	68.40	35.7	42.9	0.0	21.4	14
28	55.08	07.37	13.38	65.80	25.0	66.7	4.2	04.2	24
42	52.25	03.61	06.91	63.00	02.9	88.6	8.6	00.0	35
55	55.92	07.18	12.84	67.30	22.6	71.0	3.2	03.2	31
58	60.24	04.66	07.74	72.40	47.6	52.4	0.0	00.0	21
68	56.85	07.95	13.98	65.70	32.1	60.7	0.0	03.6	27
79	50.44	11.31	22.42	64.20	16.2	59.5	8.1	13.5	36

Analysis:- The above table reveals that –

- (i) Max. average % marks are obtained by centre code **58**.
- (ii) Centre code **42** performed better in respect of consistency having min. C.V.
- (iii) The highest percentage is from centre code **03**.
- (iv) The Highest percentage of first division is from centre code **58**.
- (v) Min. fail percentage is from centre code **42&58**.
- (vi) Statistically best two colleges are centre codes- **42** and **58**.

M.A. (Geography)



Centre-wise Descriptive Statistics of % of Marks 2009

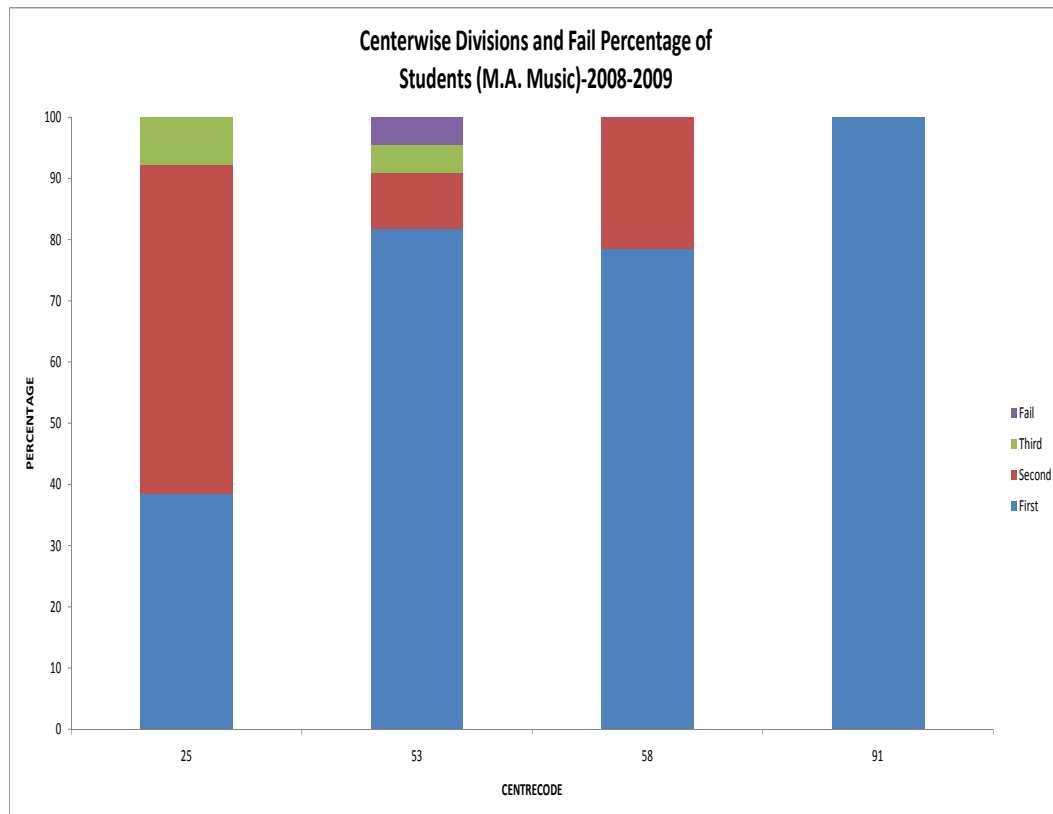
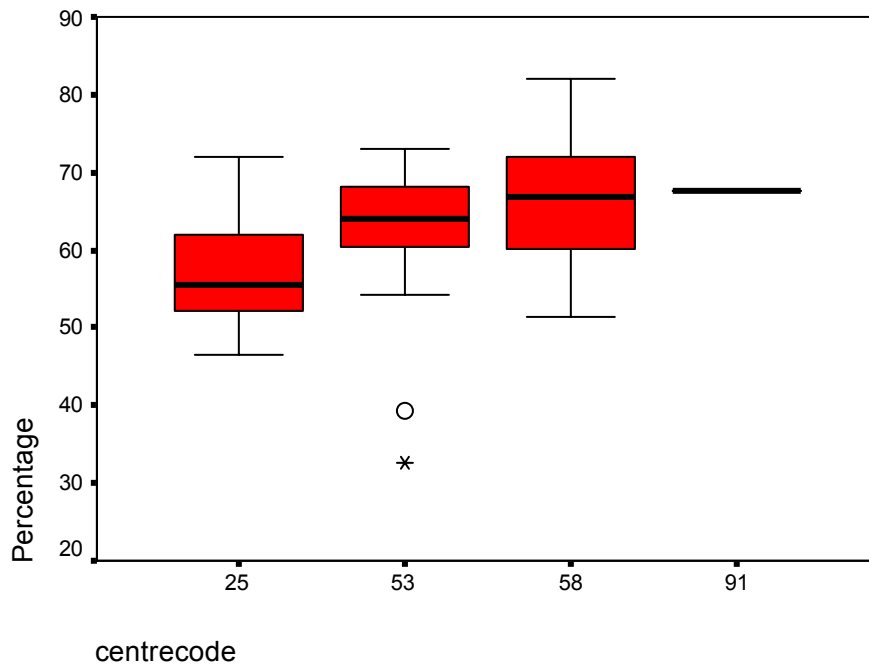
(M. A. MUSIC)

College Code	Mean %	S.D.	C.V.	Highest % of Marks	I	II	III	Fail	Total No. of Students
25	57.51	7.17	12.47	72.00	38.5	53.8	7.7	0.0	13
53	62.34	9.78	15.68	73.00	81.8	09.1	4.5	4.5	22
58	61.50	8.35	13.58	82.00	78.6	21.4	0.0	0.0	14
91	67.60	----	----	67.60	100.0	00.0	0.0	0.0	01

Analysis:- The above table reveals that –

- (i) Max. average % marks are obtained by centre code **53**.
- (ii) Centre code **25** performed better in respect of consistency having min. C.V.
- (iii) The highest percentage is from centre code **58**.
- (iv) The Highest percentage of first division is from centre code **53**.
- (v) Min. fail percentage is from centre code **25&58**.
- (vi) Statistically best two colleges are centre codes- **53** and **58**.

M.A. (Music)



Centre-wise Descriptive Statistics of % of Marks 2009

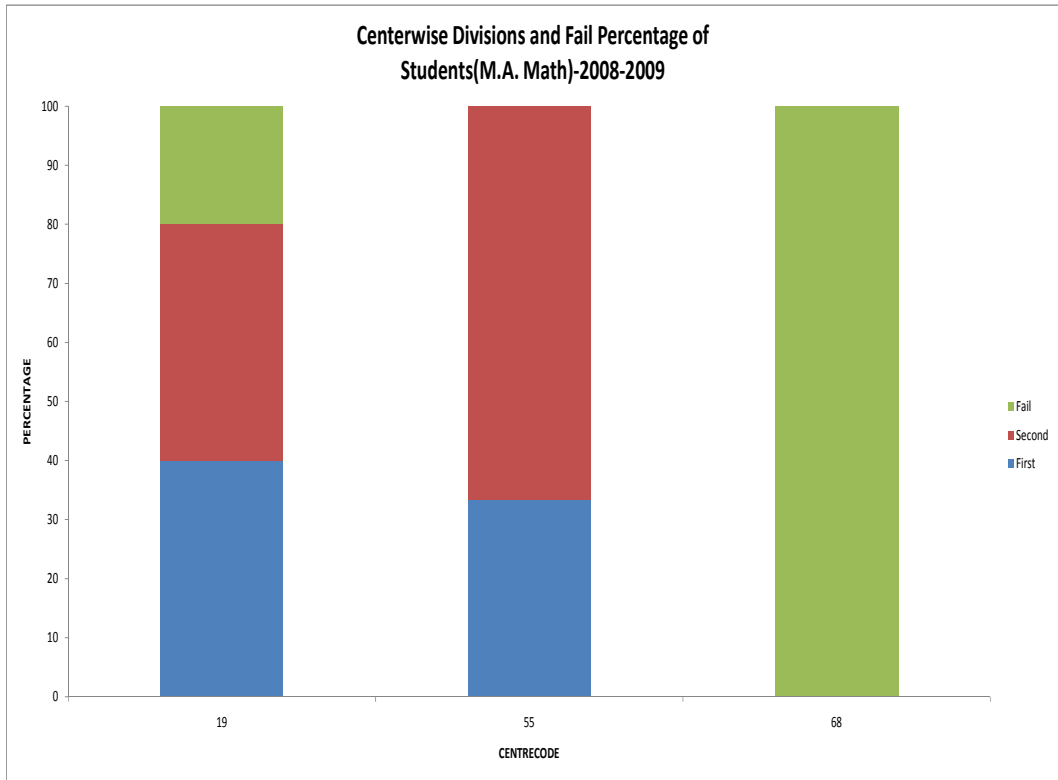
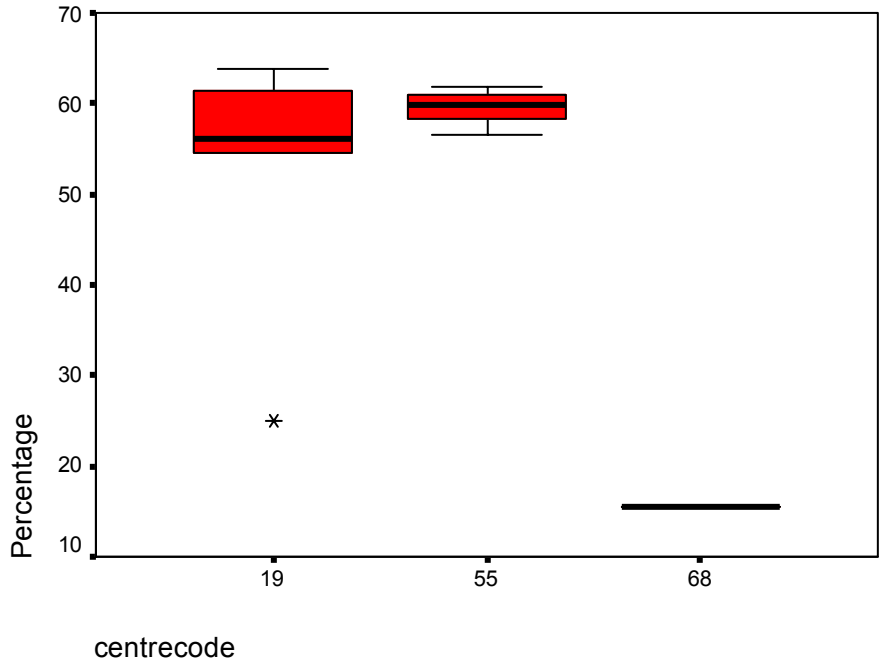
(M. A. MATHEMATICS)

College Code	Mean %	S.D.	C.V.	Highest % of Marks	I	II	III	Fail	Total No. of Students
19	52.18	15.61	29.92	63.90	40.0	40.0	0.0	20.0	05
55	59.40	02.69	04.53	61.80	33.3	66.7	0.0	00.0	03
68	15.50	----	----	15.50	0.0	0.0	0.0	100.0	01

Analysis:- The above table reveals that –

- (i) Max. average % marks are obtained by centre code **55**.
- (ii) Centre code **55** performed better in respect of consistency having min. C.V.
- (iii) The highest percentage is from centre code **19**.
- (iv) The Highest percentage of first division is from centre code **19**.
- (v) Min. fail percentage is from centre code **55**.
- (vi) Statistically the best college is centre code- **55**.

M.A.(Mathematics)



Centre-wise Descriptive Statistics of % of Marks 2009

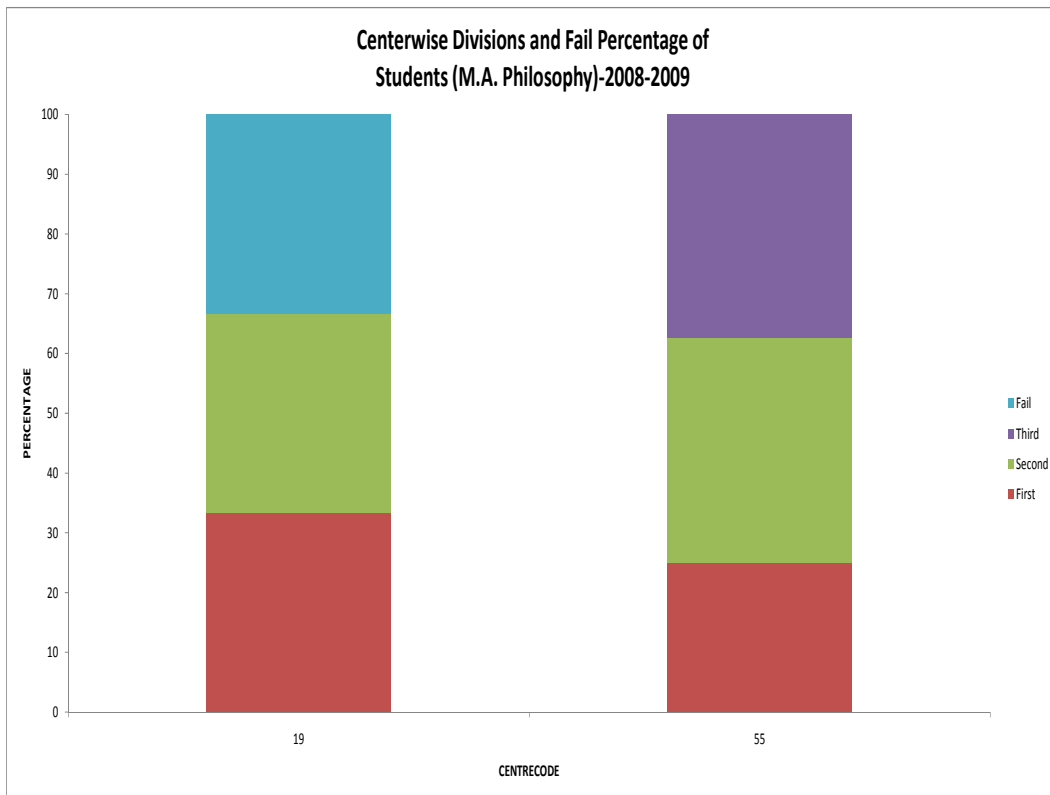
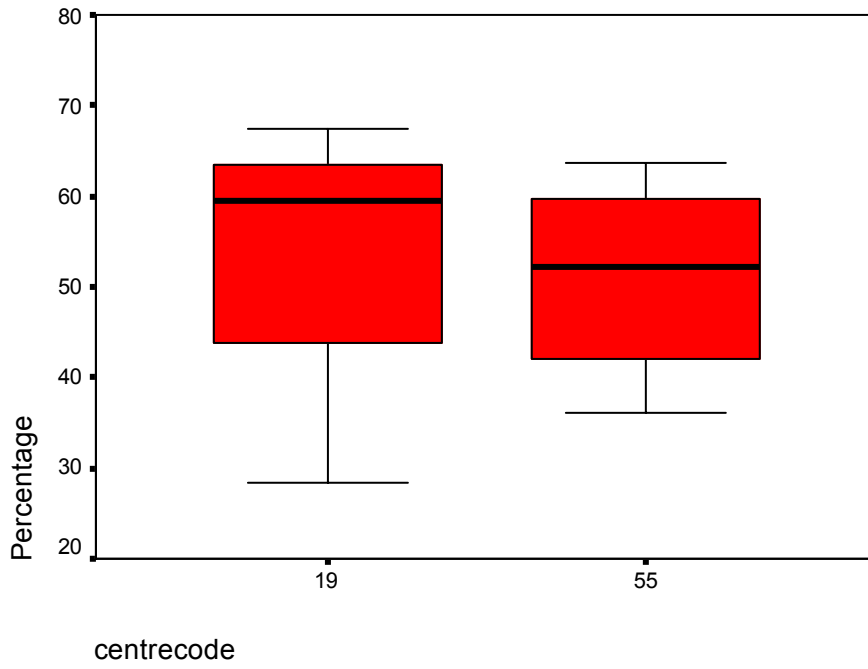
(M. A. PHILOSOPHY)

College Code	Mean %	S.D.	C.V.	Highest % of Marks	I	II	III	Fail	Total No. of Students
19	51.73	20.69	39.99	67.50	33.3	33.3	00.0	33.3	03
55	50.96	10.10	19.82	63.70	25.0	37.5	37.5	00.0	08

Analysis:- The above table reveals that –

- (i) Max. average % marks are obtained by centre code **19**.
- (ii) Centre code **55** performed better in respect of consistency having min. C.V.
- (iii) The highest percentage is from centre code **19**.
- (iv) The Highest percentage of first division is from centre code **19**.
- (v) Min. fail percentage is from centre code **55**.
- (vi) Statistically the best college is centre code- **55**.

M.A.(Philosophy)



Centre-wise Descriptive Statistics of % of Marks 2009

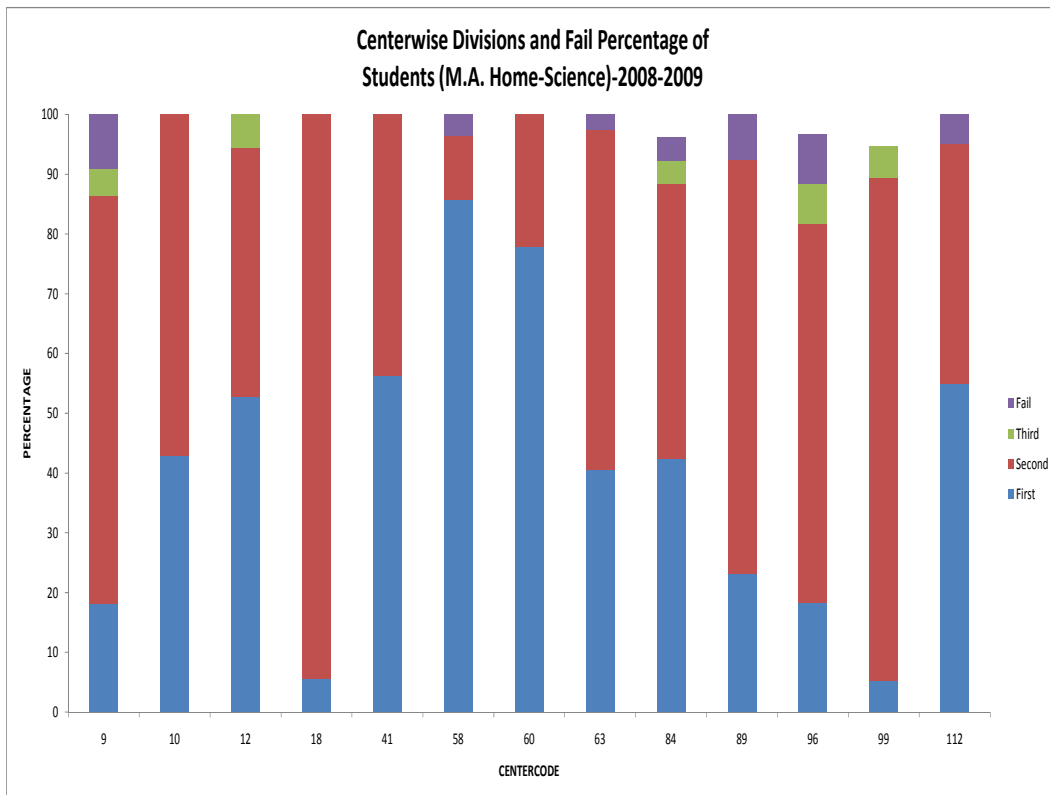
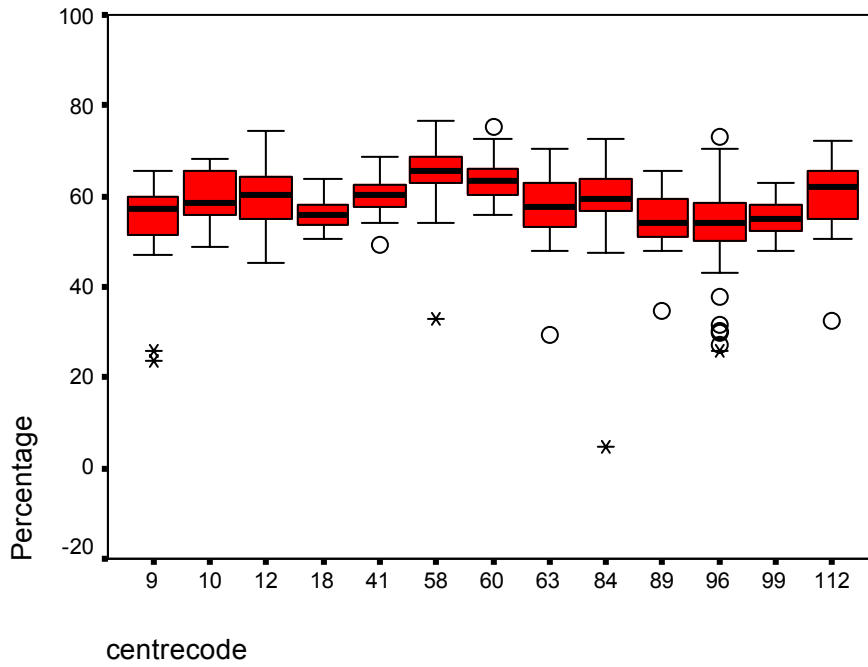
(M. A. HOME SCIENCE)

College Code	Mean %	S.D.	C.V.	Highest % of Marks	I	II	III	Fail	Total No. of Students
09	54.23	10.56	19.47	65.50	18.2	68.2	4.5	9.1	22
10	59.63	06.16	10.33	68.40	42.9	57.1	0.0	0.0	14
12	59.64	07.27	12.17	74.50	52.8	41.7	5.6	0.0	36
18	56.18	03.38	06.02	63.90	05.6	94.4	0.0	0.0	18
41	59.86	04.81	08.04	68.80	56.3	43.8	0.0	0.0	16
58	64.45	07.93	12.30	76.60	85.7	10.7	0.0	3.6	28
60	63.50	04.71	07.42	75.50	77.8	22.2	0.0	0.0	27
63	57.78	07.85	13.59	70.30	40.5	56.8	0.0	2.7	37
84	57.67	12.32	21.36	72.50	42.3	46.2	3.8	3.8	25
89	54.22	07.81	14.40	65.60	23.1	69.2	0.0	7.7	13
96	53.25	09.96	18.70	72.90	18.3	63.3	6.7	8.3	58
99	55.05	03.72	06.76	63.10	05.3	84.2	5.3	0.0	18
112	60.01	9.08	15.13	72.20	55.0	40.0	0.0	5.0	20

Analysis:- The above table reveals that –

- (i) Max. average % marks are obtained by centre code **58**.
- (ii) Centre code **18** performed better in respect of consistency having min. C.V.
- (iii) The highest percentage is from centre code **58**.
- (iv) The Highest percentage of first division is from centre code **58**.
- (v) Centre codes **10,12,18,41,60& 99** have no failures.
- (vi) Statistically best four colleges are centre codes- **58, 60,41** and **112**.

M.A. (Home Science)



Centre-wise Descriptive Statistics of % of Marks 2009

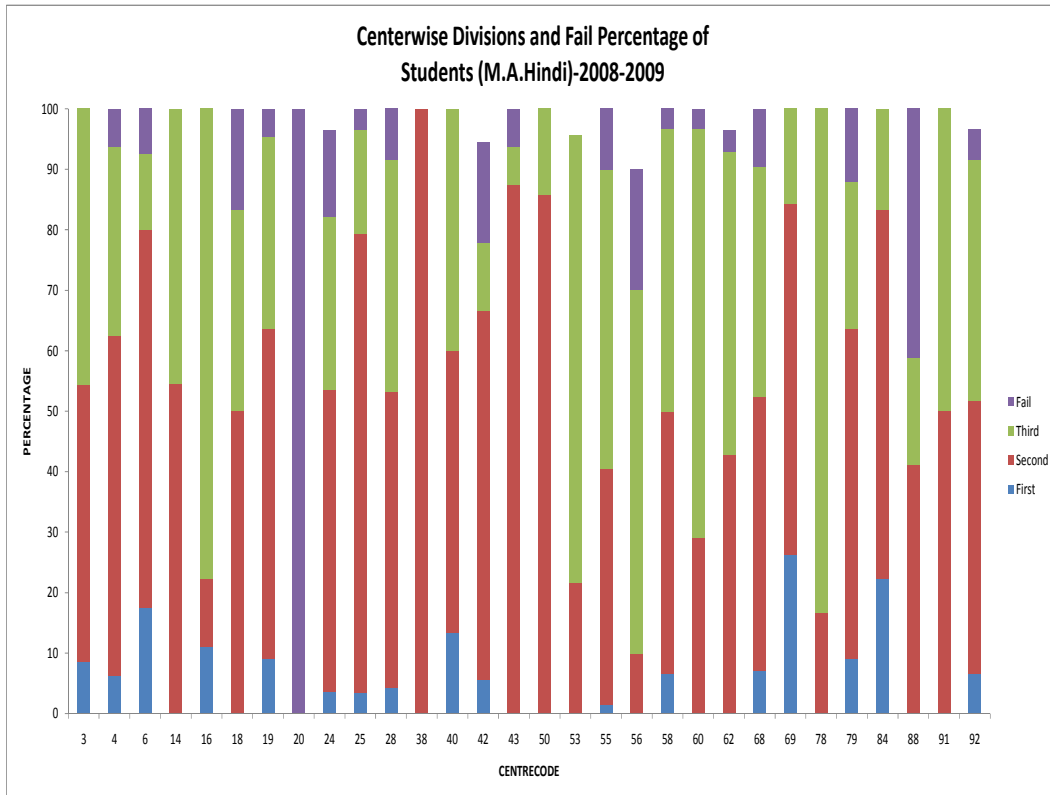
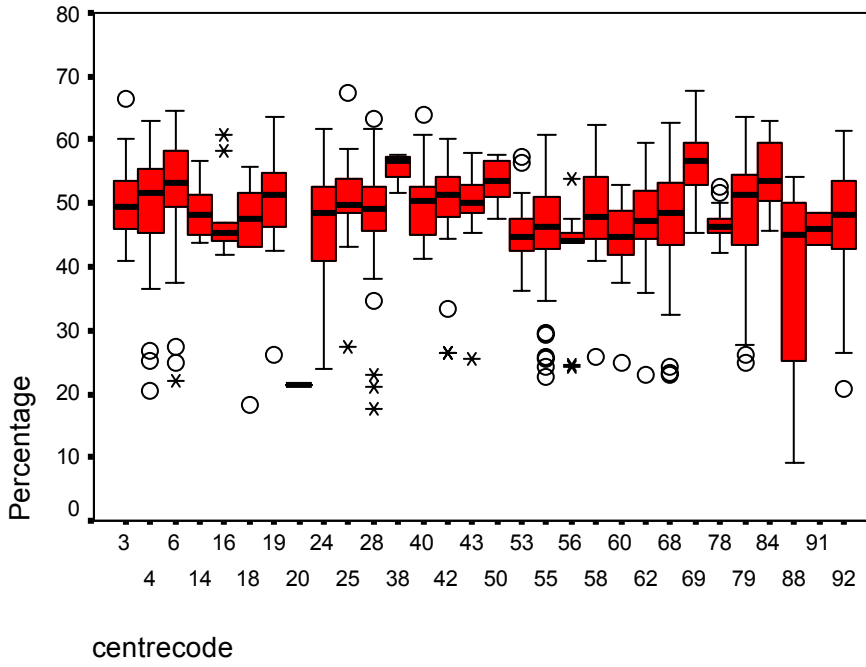
(M. A. HINDI)

College Code	Mean %	S.D.	C.V.	Highest % of Marks	I	II	III	Fail	Total No. of Students
03	50.07	05.67	11.32	66.50	08.6	45.7	45.7	00.0	35
04	49.57	09.05	18.26	63.00	06.3	56.3	31.3	06.3	48
06	51.77	09.86	19.04	64.60	17.5	62.5	12.5	07.5	40
14	49.02	04.67	09.53	56.80	00.0	54.5	45.5	00.0	11
16	47.97	04.70	09.80	60.70	11.1	11.1	77.8	00.0	09
18	44.03	13.43	30.50	55.90	00.0	50.0	33.3	16.7	06
19	50.39	07.64	15.16	63.50	09.1	54.5	31.8	04.5	22
20	21.30	--	--	21.30	00.0	00.0	00.0	100.0	01
24	45.53	09.98	21.92	61.80	03.6	50.0	28.6	14.3	27
25	50.65	06.62	13.07	67.40	03.4	75.9	17.2	03.4	29
28	47.90	09.27	19.35	63.30	04.3	48.9	38.3	08.5	47
38	55.37	03.20	05.78	57.60	00.0	100.0	00.0	00.0	03
40	50.14	06.35	12.66	64.00	13.3	46.7	40.0	00.0	15
42	49.14	10.71	21.79	60.30	05.6	61.1	11.1	16.7	17
43	47.46	07.06	14.87	58.00	00.0	87.5	06.3	06.3	16
50	53.44	03.86	07.22	57.70	00.0	85.7	14.3	00.0	07
53	45.44	05.25	11.55	57.30	00.0	21.7	73.9	00.0	22
55	46.02	07.92	17.21	60.70	01.4	39.1	49.3	10.1	69
56	41.44	10.16	24.52	53.80	00.0	10.0	60.0	20.0	09
58	48.65	07.41	15.23	62.30	06.7	43.3	46.7	03.3	30
60	44.54	05.66	12.71	52.80	00.0	29.0	67.7	03.2	31
62	47.56	07.07	14.86	59.60	00.0	42.9	50.0	03.6	27
68	47.28	09.17	19.39	62.60	07.1	45.2	38.1	09.5	42
69	55.75	05.97	10.71	67.80	26.3	57.9	15.8	00.0	19
78	46.51	02.86	06.15	52.50	00.0	16.7	83.3	00.0	18
79	48.36	09.96	20.59	63.50	09.1	54.5	24.2	12.1	33
84	54.58	05.82	10.66	63.00	22.2	61.1	16.7	00.0	18
88	38.73	13.83	35.71	54.20	00.0	41.2	17.6	41.2	17
91	45.95	03.61	07.86	48.50	00.0	50.0	50.0	00.0	02
92	48.01	08.12	16.91	61.30	06.7	45.0	40.0	05.0	58

Analysis:- The above table reveals that –

- (i) Max. average % marks are obtained by centre code **69**.
- (ii) Centre code **38** performed better in respect of consistency having min. C.V.
- (iii) The highest percentage is from centre code **69**.
- (iv) The Highest percentage of first division is from centre code **69**.
- (v) Max. fail percentage is from centre code **88**.
- (vi) Statistically best five colleges are centre codes- **25, 38, 50, 69, 84**.

M.A. (Hindi)



Centre-wise Descriptive Statistics of % of Marks 2009

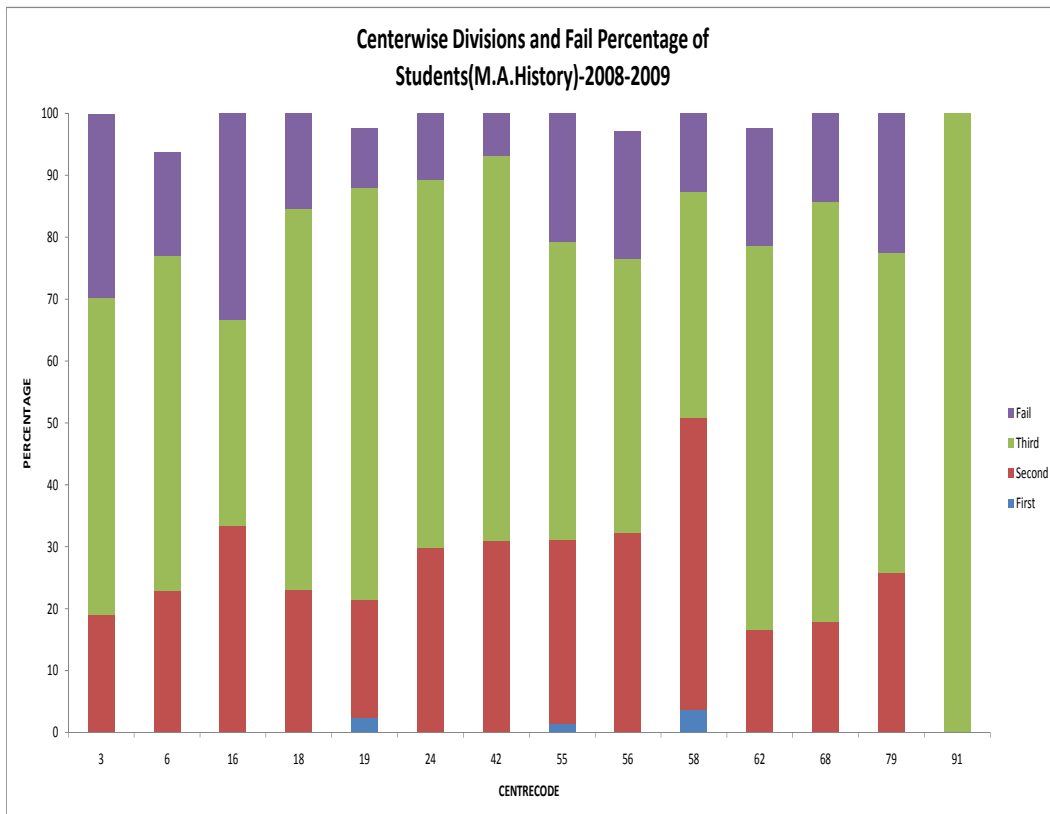
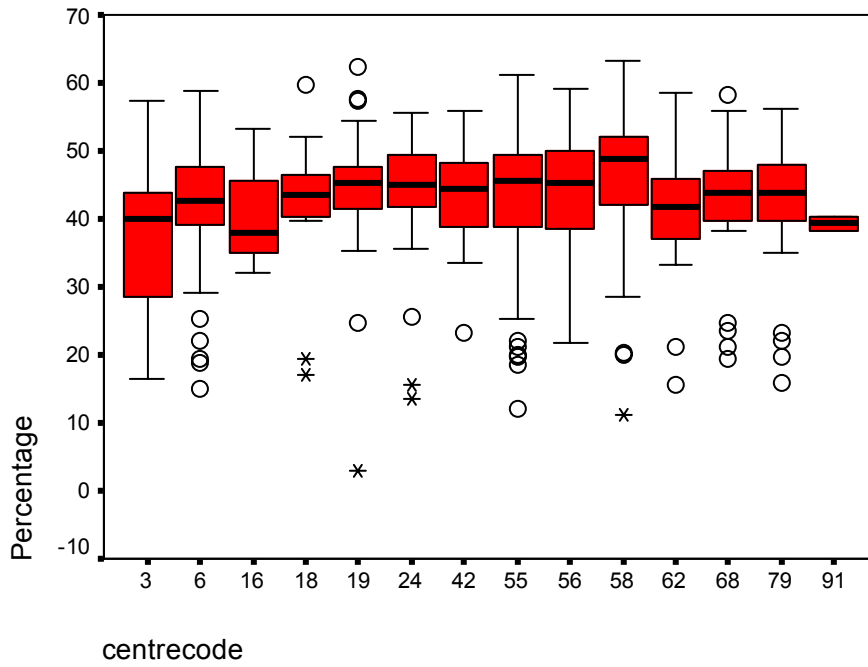
(M. A. HISTORY)

College Code	Mean %	S.D.	C.V.	Highest % of Marks	I	II	III	Fail	Total No. of Students
03	37.60	11.88	31.59	57.40	0.0	18.9	51.4	29.7	37
06	41.72	09.95	23.85	58.80	0.0	22.9	54.2	16.7	45
16	41.03	10.94	26.66	53.20	0.0	33.3	33.3	33.3	03
18	41.42	11.64	28.10	59.60	0.0	23.1	61.5	15.4	13
19	44.47	09.36	21.04	62.30	2.4	19.0	66.7	09.5	41
24	43.58	09.02	20.70	55.70	0.0	29.7	59.5	10.8	37
42	43.75	07.01	16.02	56.00	0.0	31.0	62.1	06.9	29
55	42.83	09.91	23.14	61.20	1.3	29.9	48.1	20.8	77
56	43.05	9.45	21.95	59.00	0.0	32.4	44.1	20.6	33
58	46.14	10.19	22.08	63.10	3.6	47.3	36.4	12.7	55
62	41.42	08.06	19.46	58.60	0.0	16.7	61.9	19.0	41
68	42.11	09.67	22.96	58.30	0.0	17.9	67.9	14.3	28
79	41.79	10.07	24.10	56.10	0.0	25.8	51.6	22.6	31
91	39.30	01.56	03.97	40.40	0.0	00.0	100	00.0	02

Analysis:- The above table reveals that –

- (i) Max. average % marks are obtained by centre code **58**.
- (ii) Centre code **42** performed better in respect of consistency having min. C.V.
- (iii) The highest percentage is from centre code **58**.
- (iv) The Highest percentage of first division is from centre code **58**.
- (v) Min. fail percentage is from centre code **42**.
- (vi) Statistically best five colleges are centre codes- **19, 24, 42, 56** and **58**.

M.A.(History)



Centre-wise Descriptive Statistics of % of Marks 2009

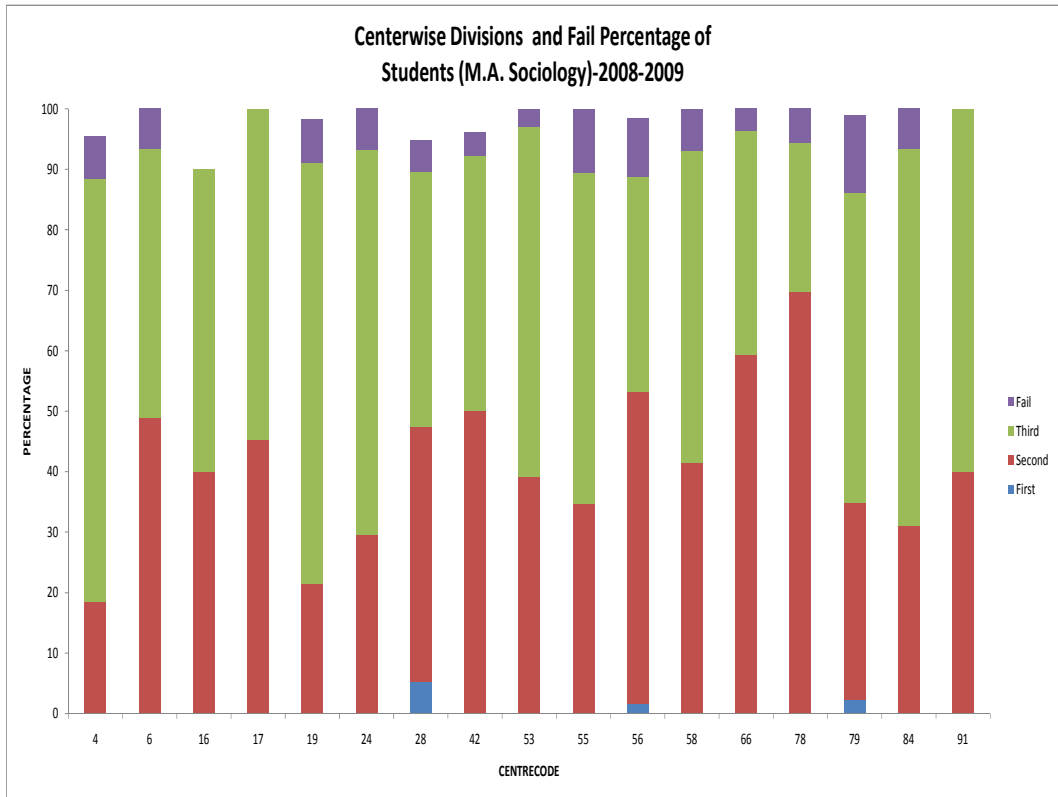
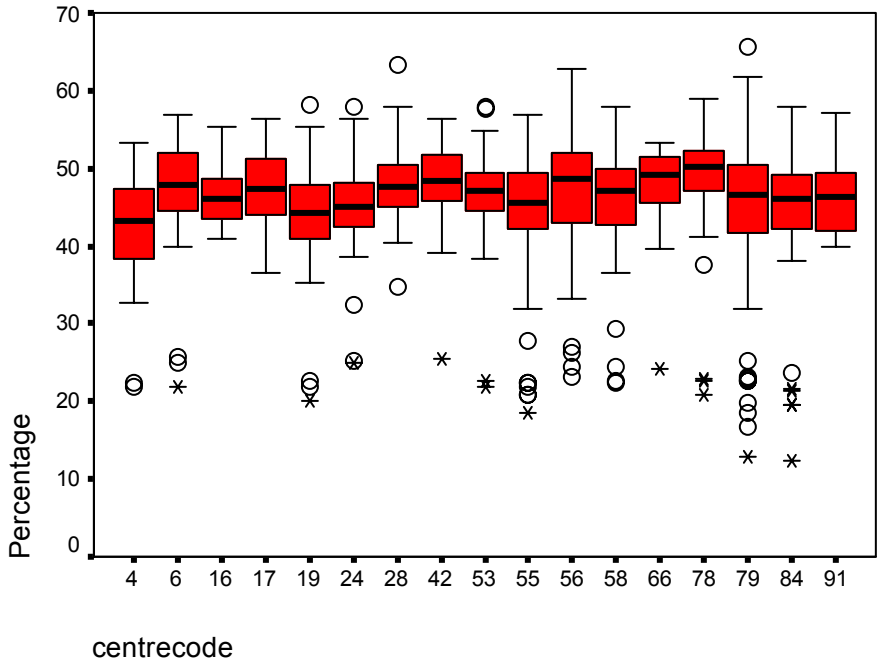
(M. A. SOCIOLOGY)

College Code	Mean %	S.D.	C.V.	Highest % of Marks	I	II	III	Fail	Total No. of Students
04	42.35	06.72	15.87	53.20	0.0	18.6	69.8	07.0	41
06	47.08	07.44	15.80	57.00	0.0	48.9	44.4	06.7	45
16	47.10	04.86	10.32	55.40	0.0	40.0	50.0	00.0	09
17	47.37	04.83	10.20	56.30	0.0	45.3	54.7	00.0	53
19	43.92	07.32	16.67	58.20	0.0	21.4	69.6	07.1	55
24	44.88	06.26	13.95	58.00	0.0	29.5	63.6	06.8	44
28	47.83	06.48	13.55	63.40	5.3	42.1	42.1	05.3	18
42	47.79	06.51	13.62	56.40	0.0	50.0	42.3	03.8	25
53	46.43	05.99	12.90	57.80	0.0	39.1	58.0	02.9	69
55	44.36	07.71	17.38	57.00	0.0	34.6	54.8	10.6	104
56	47.20	8.25	17.48	62.90	1.6	51.6	35.5	09.7	61
58	45.84	07.48	16.32	57.90	0.0	41.4	51.7	06.9	58
66	47.60	05.90	12.39	53.30	0.0	59.3	37.0	03.7	27
78	48.51	07.81	16.10	58.90	0.0	69.8	24.5	05.7	53
79	44.45	10.12	22.77	65.60	2.3	32.6	51.2	12.8	85
84	44.59	07.78	17.45	57.90	0.0	31.1	62.2	06.7	90
91	47.23	05.93	12.55	57.10	0.0	40.0	60.0	00.0	10

Analysis:- The above table reveals that –

- (i) Max. average % marks are obtained by centre code **28**.
- (ii) Centre code **17** performed better in respect of consistency having min. C.V.
- (iii) The highest percentage is from centre code **79**.
- (iv) The Highest percentage of first division is from centre code **28**.
- (v) Centre codes **16,17** and **91** have no failures.
- (vi) Statistically best six colleges are centre codes- **16, 17, 28, 42,66** and **91**.

M.A.(Sociology)



Centre-wise Descriptive Statistics of % of Marks 2009

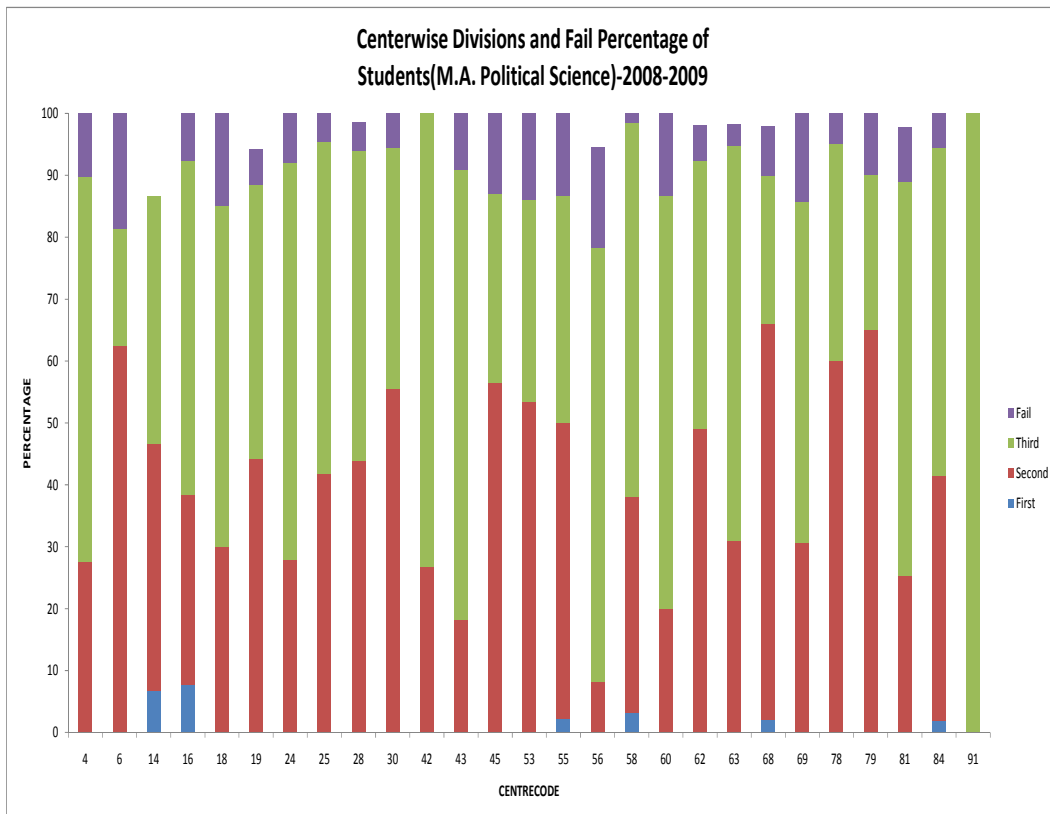
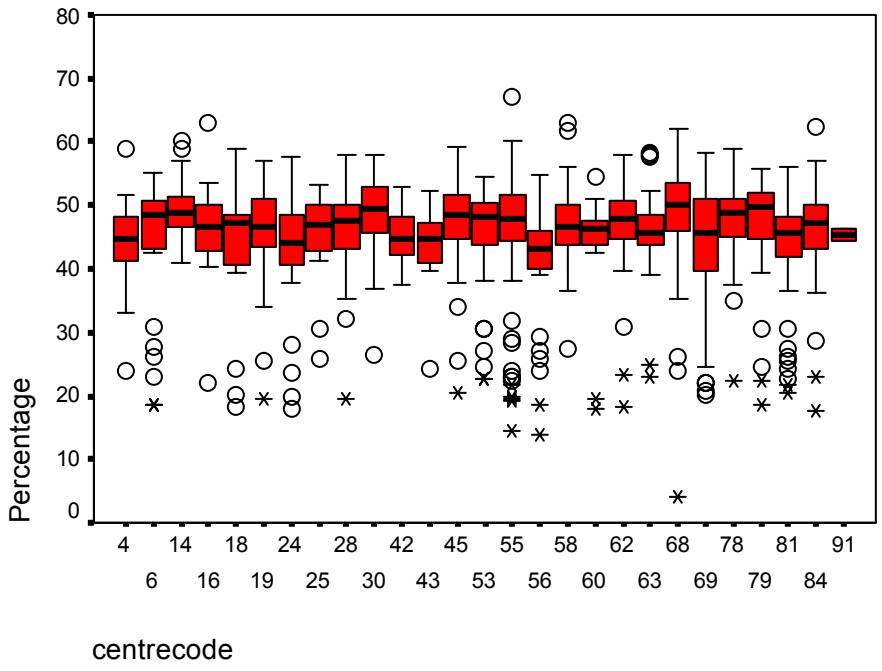
(M. A. POLITICAL SCIENCE)

College Code	Mean %	S.D.	C.V.	Highest % of Marks	I	II	III	Fail	Total No. of Students
04	44.21	06.51	14.72	59.00	0.0	27.6	62.1	10.3	29
06	44.36	10.48	23.62	55.20	0.0	62.5	18.8	18.8	32
14	49.54	06.06	12.23	60.10	6.7	40.0	40.0	00.0	13
16	46.08	09.37	20.33	62.90	7.7	30.8	53.8	07.7	13
18	43.25	10.64	24.60	58.90	0.0	30.0	55.0	15.0	20
19	46.18	07.25	15.70	56.90	0.0	44.2	44.2	05.8	49
24	43.35	07.76	17.90	57.60	0.0	28.0	64.0	08.0	50
25	46.25	05.47	11.83	53.20	0.0	41.9	53.5	04.7	43
28	46.40	06.50	14.00	57.90	0.0	43.9	50.0	04.5	65
30	47.83	07.32	15.30	57.90	0.0	55.6	38.9	05.6	18
42	45.20	04.25	09.40	53.00	0.0	26.7	73.3	00.0	30
43	43.57	07.61	17.47	52.30	0.0	18.2	72.7	09.1	11
45	46.50	09.62	20.69	59.10	0.0	56.5	30.4	13.0	23
53	45.08	08.49	18.83	54.50	0.0	53.5	32.6	14.0	43
55	45.79	10.18	22.23	67.00	2.2	47.8	36.7	13.3	90
56	40.58	09.02	22.22	54.70	0.0	08.1	70.3	16.2	35
58	46.88	05.49	11.71	62.90	3.2	34.9	60.3	01.6	63
60	43.21	10.47	24.23	54.40	0.0	20.0	66.7	13.3	15
62	47.15	07.17	15.21	58.10	0.0	49.1	43.4	05.7	52
63	45.66	05.83	12.77	58.30	0.0	31.0	63.8	03.4	57
68	48.05	09.60	19.98	62.10	2.0	64.0	24.0	08.0	49
69	43.19	09.68	22.41	58.30	0.0	30.6	55.1	14.3	49
78	47.65	06.52	13.68	58.80	0.0	60.0	35.0	05.0	40
79	46.76	08.70	18.60	55.80	0.0	65.0	25.0	10.0	40
81	43.96	07.38	16.79	56.20	0.0	25.3	63.7	08.8	89
84	45.97	07.60	16.53	62.40	1.9	39.6	52.8	05.7	53
91	45.40	01.41	03.10	46.40	0.0	00.0	100.0	00.0	02

Analysis:- The above table reveals that –

- (i) Max. average % marks are obtained by centre code **14**.
- (ii) Centre code **42** performed better in respect of consistency having min. C.V.
- (iii) The highest percentage is from centre code **55**.
- (iv) The Highest percentage of first division is from centre code **16**.
- (v) Min. fail percentage is from centre code **14 & 42**.
- (vi) Statistically best five colleges are centre codes- **14, 30, 62, 78 & 79**.

M.A.(Political Science)



Centre-wise Descriptive Statistics of % of Marks 2009

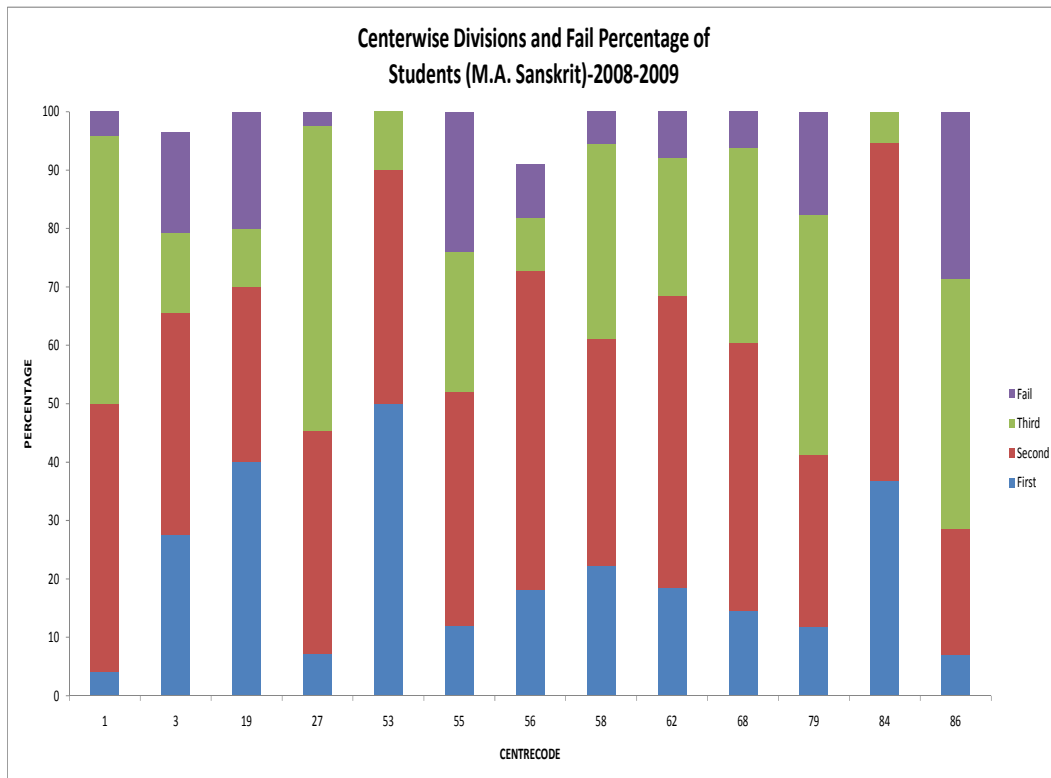
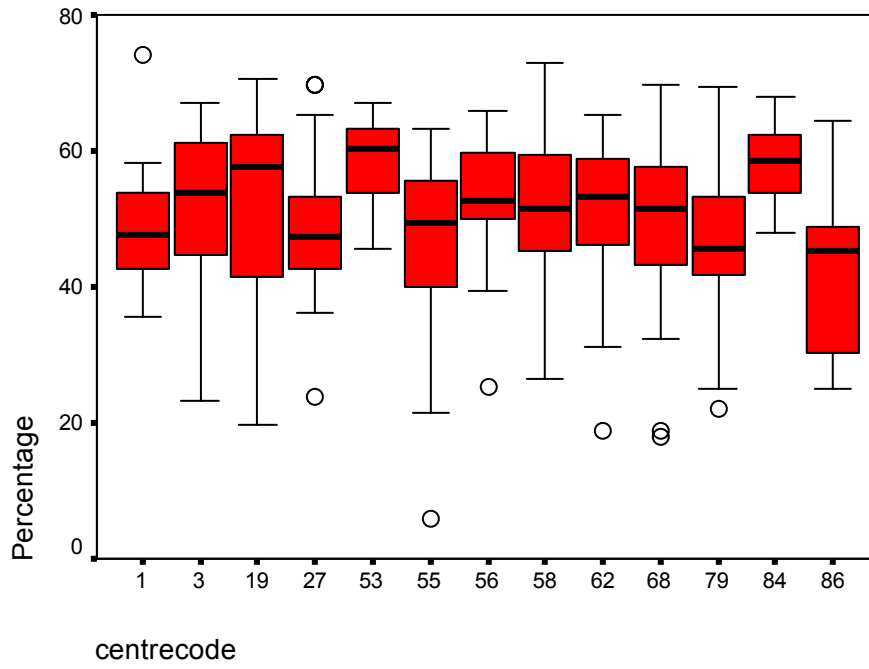
(M. A. SANSKRIT)

College Code	Mean %	S.D.	C.V.	Highest % of Marks	I	II	III	Fail	Total No. of Students
01	48.89	08.18	16.73	74.00	04.2	45.8	45.8	04.2	24
03	50.69	13.92	27.46	67.10	27.6	37.9	13.8	17.2	28
19	50.92	17.38	34.13	70.50	40.0	30.0	10.0	20.0	10
27	47.99	08.63	17.98	69.60	07.1	38.1	52.4	02.4	42
53	58.26	06.75	11.58	67.00	50.0	40.0	10.0	00.0	10
55	44.81	14.43	32.20	63.10	12.0	40.0	24.0	24.0	25
56	51.65	11.87	22.98	65.90	18.2	54.5	09.1	09.1	10
58	52.01	10.62	20.42	72.90	22.2	38.9	33.3	05.6	18
62	51.46	09.98	19.39	65.20	18.4	50.0	23.7	07.9	38
68	50.23	10.69	21.28	69.60	14.6	45.8	33.3	06.3	48
79	46.20	12.89	27.90	69.30	11.8	29.4	41.2	17.6	17
84	57.98	06.19	10.68	67.80	36.8	57.9	05.3	00.0	19
86	42.94	11.18	26.04	64.50	07.1	21.4	42.9	28.6	14

Analysis:- The above table reveals that –

- (i) Max. average % marks are obtained by centre code **53**.
- (ii) Centre code **84** performed better in respect of consistency having min. C.V.
- (iii) The highest percentage is from centre code **01**.
- (iv) The Highest percentage of first division is from centre code **53**.
- (v) Min. fail percentage is from centre code **53&84**.
- (vi) Statistically best three colleges are centre codes- **53, 58 & 84**.

M.A.(Sanskrit)



Note/Disclaimer:

- (i) The above statistical analysis is tentative and is based on the data available so far. Best efforts are made by the University for analyzing the data, however any typographical errors/discrepancies, whatsoever are inadvertent.
- (ii) The analysis is carried out simply for an overall eye view of the performance of the students from various colleges and cannot be used for any legal purposes.
- (iii) Statistically, best colleges are assigned keeping in view the criteria of Mean percentage, Coefficient of variation and percentage of first/second divisioners/failures.